



Way of Life!

**GENUINE  
RIGGING-PARTS  
AND  
ACCESSORIES**



# WELCOME TO THE 50<sup>TH</sup> ANNIVERSARY OF SUZUKI OUTBOARDS

We've been at the forefront of outboard technology since we created our first outboard D55 in 1965 and will be celebrating the 50th anniversary in 2015.

The engines used in our outboard motors have always been designed exclusively for marine use and we have continually brought original technologies to the market. We have led the way with innovations such as the down thrust propeller system in 1965, developing the first ever stainless steel water pump housing in 1973, launching oil injection outboards in 1980, inventing ceramic fibre reinforced metal pistons in 1990, introducing the world's first 220.7kW (300PS) V6 four stroke outboard in 2006 and, in another world first, launching a keyless ignition system on the DF200AP.

We have come a long way since 1965 and our current range of four stroke outboards is second to none in the market place. Our engineers are passionate about boating and willing to spend all of their time perfecting our outboard motors so that our products enable you to maximise your time on the water. So, from the light-weight and portable DF2.5 to the award winning power of the DF300AP, we've got an outboard to suit your way of life.



**1960s - D55**



**1970s - DT25**



**1980s - DT200 EXANTÉ**

## KEY MOMENTS IN OUR HISTORY:

**1965**

Our first outboard, the D55, launched..

**1980**

We first invented oil injection for outboards, and introduced the oil injection series DT85OI, DT115OI and DT140OI.

**1987**

DT200 Exanté wins the first "Most Innovative Products" award from the National Marine Manufacture's association (NMMA).

**1994**

Introduction of DF9.9 and DF15, our first four stroke outboards.

**1998**

Introduction of DF40 and DF50, our first four stroke outboards with DOHC 4 valves for each cylinder. DF40 and DF50 win the "Innovation Award" from the International Marine Trades Exposition and Convention (IMTEC), and it makes Suzuki the first manufacturer to receive this award two years in a row.

**1966**

Export of Suzuki Outboard Motors begins.

**1985**

DT150 and DT200, our first V6 models launched.

**1990**

DT225 added to V6 series and new Electronic Fuel Injection System introduced.

**1997**

Introduction of DF60 and DF70, our first four stroke outboards with Electronic Fuel Injection System. DF60 and DF70 win the "Innovation Award" from the International Marine Trades Exposition and Convention (IMTEC).



**1990s - DF70**



**2000s - DF300**



**2010s - DF200AP**



**2003**

DF200/225/250, the first Suzuki four stroke V6 outboards launched. DF250 wins the "IMTEC Innovation Award".

**2008**

New generation four stroke DF70A/80A/90A debut. DF90A is the lightest, most compact outboard in 66.2kW (90PS) four stroke class and is the first outboard to utilise Suzuki Lean Burn Technology.

**2011**

New DF300AP is the world's first Selective Rotation outboard. DF300AP wins the "2012 NMMA Award for Innovation".

**2015**

Launch of new DF200A/AP with world-leading keyless ignition technology

**2000**

DF90 and DF115 marketed. These models are the first to utilise an offset drive shaft, making them the most compact outboards in their class.

**2006**

DF300 is the industry's first 220.7kW (300PS) V6 four stroke outboard, and the first outboard to utilise an electronic remote control. DF300 is the winner, the IBEX 2006 Innovation Award from The National Marine Manufacturer's Association (NMMA).

**2010**

New DF40A/50A win the "2011 NMMA Award for Innovation".

**2012**

Introduction of new generation DF15A/20A, the world's first outboards to feature battery-less Fuel Injection in the 11.0kW (15PS)/14.7kW (20PS) class. Suzuki was honored to be chosen as the sole supplier of outboard motors to the London 2012 Olympic and Paralympic Games Sailing Regatta.



**Dear Customer,**

Quality. Dependability. Innovation. Everything that you expect from your outboard motors is delivered with style by SUZUKI.

Demand no less from the products that you choose to enhance your total boating pleasure. Demand GENUINE SUZUKI ACCESSORIES.

This catalogue represents our commitment to provide you with the finest products available. From our classic line of matching instruments and gauges to our custom-engineered propellers and rigging items, you can depend on GENUINE SUZUKI ACCESSORIES for optimum performance.

Take a few minutes to browse through this catalogue, and then be sure to visit your AUTHORIZED SUZUKI DEALER for complete ordering information.

Thank you.

**SUZUKI INTERNATIONAL EUROPE GmbH**



## MODEL NAME AND ENGINE NUMBER

**NOTE :** Items and their part numbers showing in this catalogue are basically applicable to models of following engine numbers. Please consult your local dealers regarding other models and their rigging-parts and accessories.

model	engine number
DF300AP	30002P-510001~
DF250AP	25003P-510001~
DF250T	25003F-510001~
DF250Z	25003Z-510001~
DF225T	22503F-510001~
DF225Z	22503Z-510001~
DF200AT	20003F-510001~
DF200AZ	20003Z-510001~

model	engine number
DF200AF	20003P-510001~
DF200T	20002F-510001~
DF200Z	20002Z-510001~
DF175T	17502F-510001~
DF175Z	17502Z-510001~
DF150T	15002F-510001~
DF150Z	15002Z-510001~
DF140AT	14003F-510001~

model	engine number
DF140AZ	14003Z-510001~
DF115AT	11503F-510001~
DF115AZ	11503Z-510001~
DF100AT	10003F-510001~
DF90A	09003F-510001~
DF80A	08002F-510001~
DF70A	07003F-510001~
DF60AV	06003F-510001~

model	engine number
DF60A	06002F-510001~
DF50AV	05004F-510001~
DF50A	05003F-510001~
DF40A	04003F-510001~
DF30A	03003F-510001~
DF25A	02504F-510001~
DF20A	02002F-510001~
DF15A	01504F-510001~

model	engine number
DF9.9B	00995F-510001~
DF9.9A	00994F-510001~
DF8A	00801F-510001~
DF6	00602F-510001~
DF5	00502F-510001~
DF4	00402F-510001~
DF2.5	00252F-510001~



## TABLE OF CONTENTS

<b>02</b>	<b>WELCOME TO THE 50TH ANNIVERSARY OF SUZUKI OUTBOARDS</b>
<b>06</b>	<b>NEW MULTI FUNCTION GAUGE</b>
<b>07</b>	<b>NEW SUZUKI KEYLESS START SYSTEM</b>
<b>08</b>	<b>SUZUKI MODULAR INSTRUMENT SYSTEM</b>
<b>10</b>	<b>COMPONENT OF SUZUKI MODULAR INSTRUMENT SYSTEM</b>
<b>12</b>	<b>CONNECTION FOR SUZUKI MODULAR INSTRUMENT SYSTEM</b>
<b>14</b>	<b>ANALOG INSTRUMENT</b>
<b>16</b>	<b>ELECTRONIC THROTTLE AND SHIFT SYSTEM</b>
<b>18</b>	<b>COMPONENT OF SUZUKI PRECISION CONTROL</b>
<b>20</b>	<b>MECHANICAL REMOTE CONTROL SYSTEM</b>
<b>22</b>	<b>COMPONENT OF MECHANICAL REMOTE CONTROL SYSTEM</b>
<b>24</b>	<b>STEERING</b>
<b>28</b>	<b>ELECTRICAL PARTS</b>
<b>29</b>	<b>ANODE / FUEL SYSTEM</b>
<b>32</b>	<b>PROPELLER</b>
<b>36</b>	<b>CARE &amp; MAINTENANCE ITEM</b>
<b>38</b>	<b>APPLICATION CHART</b>

### REFERENCE

Part Number	15-digit alpha-numerical number shows Part Number to be used for ordering.
Gauge Size	Shows the size (2" or 4") of the gauge.
Background	Shows a main color of display panel on the front of a gauge.
Applicable Model	Shows typical or recommended models of ENGINES that RIGGING-PARTS and ACCESSORIES can be installed to.
Maximum Speed	Shows maximum speed that SPEEDOMETER displays.
kph	Kilometers Per Hour
mph	Miles Per Hour
knots	Knots

# NEW MULTI FUNCTION GAUGE

## MAIN FEATURES

### HIGH PERFORMANCE

- Multi-function gauge displays a wide variety of information such as engine rpm, speed, trim angle, as well as diagnostics based on digital data received from the outboard motor.
- Gauges offer great reliability utilizing Suzuki's original warning system to provide the operator with accurate warning information.
- NMEA2000®\* terminal offers compatibility with a wide range of marine equipment by other manufacturers (pending).

### SUPERIOR VISIBILITY

- First color LCD offered as genuine parts by an outboard manufacturer. Suzuki's next generation standard equipment gauge offers easy to use multi-function operation with superior readability.
- Easy to see, easy to read, easy to understand display offers a variety of modes including day and night modes and digital or analog readouts.

### COMPACT

- Compact, highly versatile gauge requires an 85mm hole for mounting making them the perfect replacement for 4-inch\*\* analog gauges.

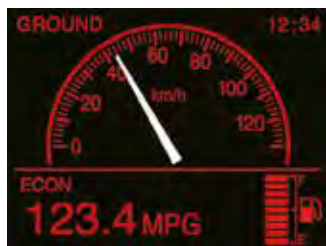
\* NMEA2000® is an NMEA (National Marine Electronics Association) standard communication protocol used for exchanging data between marine control units.

\*\* 4-inch gauges that require 85mm mounting holes (as researched by Suzuki)

## DISPLAY VARIATIONS



Analog All



Analog Speed (Night)



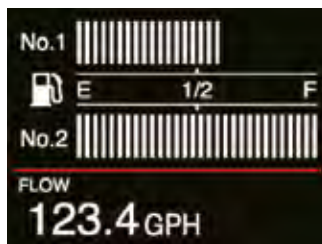
Analog Tacho



Digital All



Digital Tacho (Night)



Fuel

## DESIGN



Analog/Day mode



Digital/Night mode



## INFORMATION

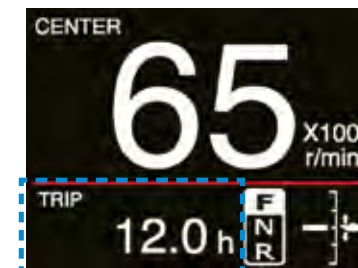
### Analog Tacho & Speed Mode

Engine position Engine rpm Ground or Water



Fuel Trim Shift Time Warning Indicator

### Tacho Mode



- Fuel flow [l/h, gph] (instantaneous)
- Mileage [km/l, mpg] (instantaneous and average)
- Trip time [h], Trip distance [km, M, NM]
- Engine hour, Voltage, Water temp and more...

## SPECIFICATIONS

- 3.5" Color display
- Size: 105mm(W)×105mm(H)×16mm(D)
- Diagnostic display
- Easy installation and setup  
Φ85mm hole & large resin nut
- Includes protective cover
- NMEA2000 output (pending)
- Applicable models:  
DF9.9B-DF300AP

Speed sensor or GPS module will be required in order to display the speed.

The NEW MULTI FUNCTION GAUGE is planned to be launched from the next spring.

- Design and specifications may change without notice due to improvements in performance and function.

# NEW SUZUKI KEYLESS START SYSTEM



## EASY OPERATION

- Suzuki original engine starting system offers a variety of functions. The key-fob is easy to carry and one is all you need to enjoy stress-free starts for greater boating pleasure.
- One step ahead of the competition, the Suzuki Keyless Start System requires no mechanical key so the key-fob remains safely in your pocket.

## WATERPROOF FLOAT KEY-FOB

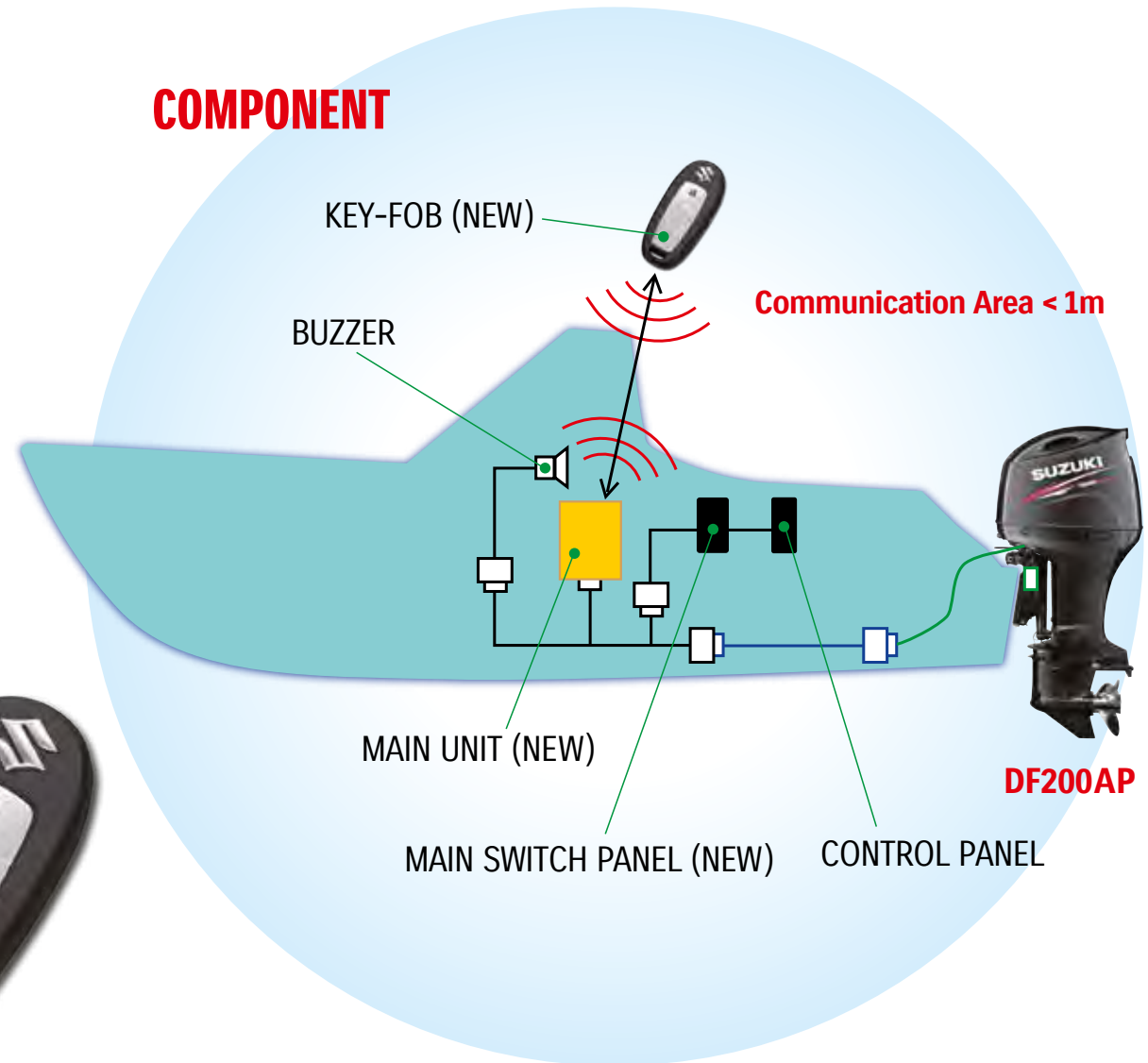
- The easy to carry key-fob remains safely in your pocket reducing risk of a lost key. The key-fob is waterproof and floats so should it ever go overboard it is retrievable.

## HIGH SECURITY

- Suzuki's system features an immobilizer function for added peace of mind. IC access codes installed in the key-fob and engine must match for the engine to start. This prevents starting the engine with the wrong key making the system a good theft deterrent as well.



## COMPONENT



Availability may differ in some regions. Please contact your local Suzuki dealer for more information.

The NEW SUZUKI KEYLESS START SYSTEM is planned to be launched from the next spring with DF200AP. Planning to apply to other models one after another.

• Design and specifications may change without notice due to improvements in performance and function.

# SUZUKI MODULAR INSTRUMENT SYSTEM

SUZUKI MODULAR INSTRUMENT SYSTEM (S.M.I.S.) uses an easy to connect and expandable cable system to transmit graphic and numerical data to Multi-Function gauges. Easy to set up and install system can be used with nearly any boat and DF300 SUZUKI Outboard. Connected to the NMEA2000® compatible system, the gauges can display real-time readings from compatible electronic probes and the exclusive SMIS engine interface to monitor all engine functions. (Engine Monitor with 4" gauge only)

**APPLICABLE MODELS : DF9.9B-DF300AP**

## SMIS MULTI-FUNCTION GAUGE

The 4" multi-function gauge uses a state-of-the-art high-contrast, dot matrix display to monitor real-time graphic and numerical digital data. When connected into the SMIS system, it can monitor all engine functions, act as a speedometer, tachometer, GPS\* and many others. (\*GPS requires additional hardware.) The 2" multi-function gauge is capable of all functions of the 4" gauge except diagnostic information. When connected to the SMIS system, it can be programmed to monitor all other functions.

### 4" SMIS MULTI-FUNCTION GAUGE



Quad analog page as a tachometer, a volt meter, a water-pressure gauge and a speedometer for single engine



**990C0-88161-000** 001

with a gray bezel + a T-connector (990C0-88110-000) + Operation & Installation Manual

### Examples of display\*\*



Engine trim page as a trim gauge for single engine



Single analog page as a speedometer



Dual digital page as a hour meter and a speedometer for single engine



Single analog page as a tachometer for single engine



Fuel manager page as a fuel gauge



Diagnostics page

### 2" SMIS MULTI-FUNCTION GAUGE



Fuel manager page



**990C0-88150-000** 002

with a gray bezel + a T-connector (990C0-88110-000) + Operation & Installation Manual

### Examples of display\*\*



as a volt meter for single engine



Engine trim page as a trim gauge for single engine



Fuel manager page

\*\* The detail instructions of display-operation are explained in the Operation & Installation Manual.



## GAUGE KIT

### 4" GAUGE KIT



### 990C0-88163-KIT 003

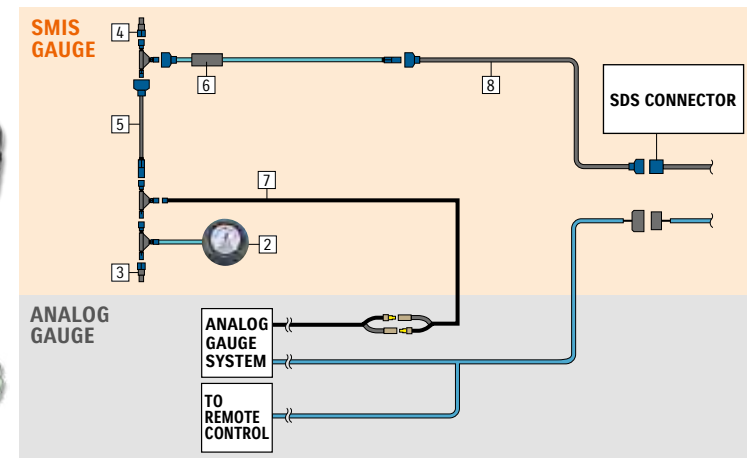
This kit contains basic components to install digital gauge.

### 2" GAUGE KIT



### 990C0-88153-KIT 004 34011-89L00-000

This kit supplements analog gauges to display additional information, and it can display information which analog gauge system cannot indicate such as fuel consumption. 34011-89L00-000 is for DF9.9B/15A/20A/25A/30A and includes 36660-89L01-000 instead of 990C0-88136-000.



Available for your convenience. Refer to the following chart for the contents.

Contents		quantity				
part name	part number	4" Gauge Kit 990C0-88163-KIT <span style="border: 1px solid black; padding: 0 2px;">003</span>		2" Gauge Kit 990C0-88153-KIT <span style="border: 1px solid black; padding: 0 2px;">004</span>		
			***	990C0-88153-KIT <span style="border: 1px solid black; padding: 0 2px;">004</span>	***	
1	4" SMIS Multi-Function Gauge	990C0-88161-000 <span style="border: 1px solid black; padding: 0 2px;">001</span>	1	1	-	-
2	2" SMIS Multi-Function Gauge	990C0-88150-000 <span style="border: 1px solid black; padding: 0 2px;">002</span>	-	-	1	1
3	Terminator Female	990C0-88113-000 <span style="border: 1px solid black; padding: 0 2px;">011</span>	1	-	1	-
4	Terminator Male	990C0-88114-000 <span style="border: 1px solid black; padding: 0 2px;">012</span>	1	-	1	-
5	Extension Cable 25 feet	990C0-88108-000	-	-	1	-
6	Engine Interface Unit	990C0-88148-000 <span style="border: 1px solid black; padding: 0 2px;">005</span>	1	1	1	1
7	SMIS Power Cable	990C0-88112-000 <span style="border: 1px solid black; padding: 0 2px;">008</span>	1	1	1	1
8	SMIS Adapter	990C0-88136-000 <span style="border: 1px solid black; padding: 0 2px;">006</span> OR 36660-89L01-000	-	-	1	-
9	Operation & Installation Manual for 4" Gauge		1	-	-	-
10	Operation & Installation Manual for 2" Gauge		-	-	1	-

\*\*\*Quantity of T-connector(s) in a kit

## OPTIONAL INSTRUMENT TRIM

Change the standard gray bezel to suit your application. Two different bezel finishes are available for 2" or 4" Multi-Function gauges.



The image shows 4" bezel, "chrome", 990C0-88021-6PK.



4" bezel, chrome  
990C0-88021-6PK

	Chrome	White
4" bezel	990C0-88021-6PK	990C0-88023-6PK
2" bezel	990C0-88025-6PK	990C0-88027-6PK

# COMPONENT OF SUZUKI MODULAR INSTRUMENT SYSTEM

**ENGINE INTERFACE** The most important part of the SMIS data system. DF150TG/ZG/175TG/ZG/200AP/250AP/300AP connect to the system, using Engine Interface Adapter.

## ENGINE INTERFACE UNIT WITH A T-CONNECTOR



990C0-88148-000 005

## SMIS ADAPTER



990C0-88136-000 006  
for DF40A-250 with analog gauge system to add on digital gauges.1.8m

## ENGINE INTERFACE ADAPTER



36661-98J20-000 007  
for dual DF150TG/ZG/175TG/ZG/200AP 250AP/300AP

36661-98J10-000 007  
for single DF150TG/ZG/175TG/ZG/200AP 250AP/300AP

36661-98J30-000 007  
for triple DF150TG/ZG/175TG/ZG/200AP 250AP/300AP

**POWER CABLE** The fused (3A) lead connects the extension cable to the power source.

## SMIS POWER CABLE WITH A T-CONNECTOR



990C0-88112-000 008

## POWER NODE WITH A T-CONNECTOR



990C0-88130-000 009  
Allows network to be powered from multiple power sources (key switch, accessory switch, etc...)  
For multiple (2 or 3) engines of DF9.9B-250

## CONNECTION HARDWARE

### T-CONNECTOR



990C0-88110-000 010  
T-connectors link all compatible cables, data and sensor devices and can be easily secured.

### TERMINATOR FEMALE



990C0-88113-000 011  
120-ohm terminators are required for any open cable ends in the system.

### TERMINATOR MALE



990C0-88114-000 012  
120-ohm terminators are required for any open cable ends in the system.

### ADAPTER HARNESS TO N NETWORK



990C0-88029-000 013  
(Black network to Blue devices)  
Allows connection to other NMEA devices (Device NET).

### ADAPTER HARNESS TO L NETWORK



990C0-88137-000 014  
(Blue network to Black devices)

## SENSORS

### FLUID LEVEL SENSOR WITH A T-CONNECTOR



**990C0-88116-000** 015

Monitors the fluid levels such as fuel, live well water level, etc. 10ft cable.

### SPEED SENSOR WITH A T-CONNECTOR



**990C0-88117-000** 016

Paddle wheel-type speed sensor. 10ft cable.

### WATER PRESSURE SENSOR WITH A T-CONNECTOR



**990C0-88139-000** 017

### WATER TEMPERATURE SENSOR WITH A T-CONNECTOR



**990C0-88118-000** 018

Surface-water temperature sensor. 10ft cable.

**990C0-88119-000**

(Thru-Hull type)

### GPS RECEIVER MODULE WITH A T-CONNECTOR



**990C0-88120-000** 019

Displays the accurate location and speed on multi-function gauges.

## CONNECTION CABLE

The extension cable is the main line of SMIS. Data communication runs the length of the boat, capped at each end with a 120-ohm terminator. NMEA2000® compatible sensors or other devices can be added by the use of T-connectors throughout the system.

### EXTENSION CABLE

**990C0-88104-000**

2 feet

**36662-88L30-000**

15 feet

**990C0-88105-000** 020

6 feet

**990C0-88108-000**

25 feet



# CONNECTION FOR SUZUKI MODULAR INSTRUMENT SYSTEM

## Example of Connection for DF150TG/ZG/175TG/ZG/200AP/250AP/300AP with S.M.I.S. Gauge

(in case of equipping the same quantities of 4" and 2" gauges as engines and stations and all optional items)

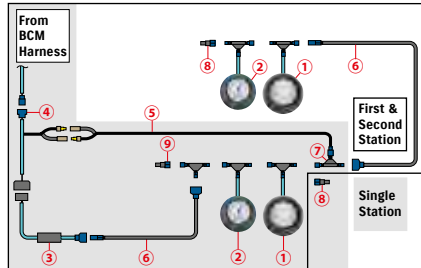
NOTE: (\*1): The required or recommended quantities are shown. Numbers in round-parentheses show the required ones if equipped.

(\*2): While some of SMIS items have a T-connector in the package, the total number of the T-connectors enclosed in them may be short to the required quantity.

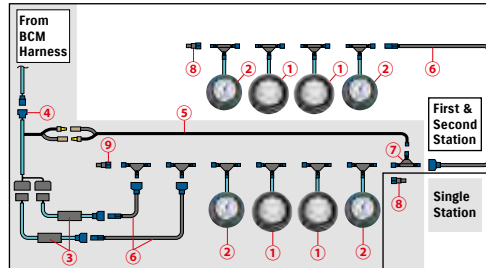
(\*3): SMIS adapter is required only for DF9.9B/15A/20A and DF25A/30A.

category	Ref. #	part name	Number of T-connector Included	Contents of Gauge Kit		engine(s)											part number	
				4"	2"	1			2			3						
						station(s)												
						1	1	1	2	1st	2nd	2	1st	2nd	2	1st		2nd
						required quantity per boat (*1)												
SMIS multi-function gauge	①	4" SMIS Multi-Function Gauge with a gray bezel	1	1		1	2	3	2	1	1	4	2	2	6	3	3	990C0-88161-000
		4" Gauge Kit	3															990C0-88163-KIT
engine interface	②	2" SMIS Multi-Function Gauge with a gray bezel	1		1	1	2	3	2	1	1	4	2	2	6	3	3	990C0-88150-000
		③	Engine Interface unit	1	1	1	1	1	1	2	2	3	3					990C0-88148-000
		④	Engine Interface Adapter for single	0						1	1							
Engine Interface Adapter for dual	0										1	1					36661-98J20-000	
		Engine Interface Adapter for triple	0												1	1		36661-98J30-000
power cable	⑤	Power Cable	1	1	1	1	1	1	1	1	1	1	1	1	1	1		990C0-88112-000
connection cable	⑥	Extension Cable 2 feet	0															990C0-88104-000
		Extension Cable 6 feet	0															990C0-88105-000
		Extension Cable 15 feet	0															36662-88L30-000
		Extension Cable 25 feet	0	0	1													
connection hardware	⑦	T-Connector (*2)	1	3	3	4 (*2)	7 (*2)	10 (*2)	6 (*2)	4	2	11 (*2)	7	4	16 (*2)	10	6	990C0-88110-000
	⑧	Terminator Female	0	1	1	1	1	1	1	1	1	1	1	1	1	1	1	990C0-88113-000
	⑨	Terminator Male	0	1	1	1	1	1	1	1	1	1	1	1	1	1	1	990C0-88114-000
		Adapter Harness to N network (Black network to Blue devices)	0															990C0-88029-000
		Adapter Harness to L network (Blue network to Black devices)	0															990C0-88137-000
sensor		Fluid Level Sensor	1			(1)	(1)	(1)	(1)			(1)			(1)			990C0-88116-000
		Speed Sensor	1			(1)	(1)	(1)	(1)			(1)			(1)			990C0-88117-000
		Water Temperature Sensor	1			(1)	(1)	(1)	(1)			(1)			(1)			990C0-88118-000
		Water Temperature Sensor (Thru-Hull type)	1			(1)	(1)	(1)	(1)			(1)			(1)			990C0-88119-000
		Water Pressure Sensor	1			(1)	(1)	(1)	(1)			(1)			(1)			990C0-88139-000
		GPS Receiver Module	1			(1)	(1)	(1)	(1)			(1)			(1)			990C0-88120-000
optional trim		4" bezel, chrome	0															990C0-88021-6PK
		4" bezel, white	0															990C0-88023-6PK
		2" bezel, chrome	0															990C0-88025-6PK
		2" bezel, white	0															990C0-88027-6PK

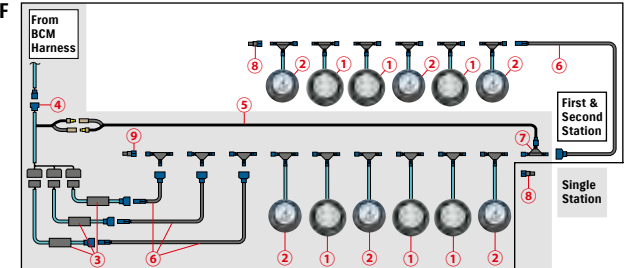
SINGLE ENGINE  
DF150TG/ZG/  
175TG/ZG/  
200AP/250AP/  
300AP



DUAL ENGINE OF  
DF150TG/ZG/  
175TG/ZG/  
200AP/250AP/  
300AP



TRIPLE ENGINE OF  
DF150TG/ZG/  
175TG/ZG/  
200AP/250AP/  
300AP

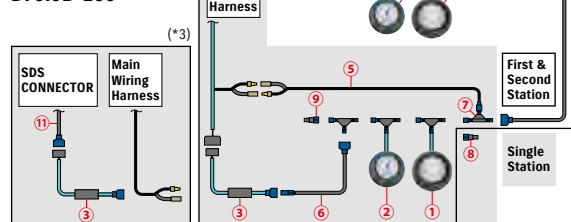


### Example of Connection for DF9.9B-250 with S.M.I.S. Gauge

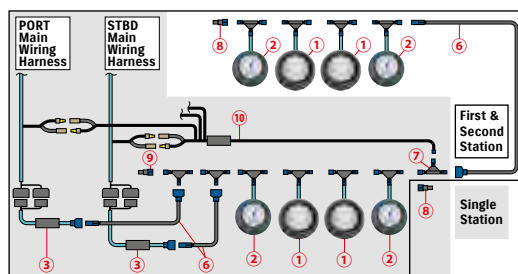
(in case of equipping the same quantities of 4" and 2" gauges as engines' and stations' and all optional items)

category	Ref. #	part name	Number of T-connector Included	Contents of Gauge Kit		engine(s)										part number		
				4"	2"	1			2			3						
						station(s)												
						1	1	1	2 total	1st	2nd	2 total	1st	2nd	2 total		1st	2nd
						required quantity per boat (*1)												
SMIS multi-function gauge	①	4" SMIS Multi-Function Gauge with a gray bezel	1	1		1	2	3	2	1	1	4	2	2	6	3	3	990C0-88161-000
		4" Gauge Kit	3	KIT														990C0-88163-KIT
	②	2" SMIS Multi-Function Gauge with a gray bezel	1		1													990C0-88150-000
engine interface	③	Engine Interface unit	1	1	1													990C0-88148-000
power cable	⑤	Power Cable	1	1	1							1	1		1	1		990C0-88112-000
	⑩	Power Node for multiple engine of DF40-250 only	1									1	1		1	1		990C0-88130-000
connection cable		Extension Cable 2 feet	0															990C0-88104-000
		Extension Cable 6 feet	0															990C0-88105-000
	⑥	Extension Cable 15 feet	0															36662-88L30-000
		Extension Cable 25 feet	0	0	1													990C0-88108-000
connection hardware	⑦	T-Connector (*2)	1	3	3	4 (*2)	7 (*2)	10 (*2)	6 (*2)	4	2	11 (*2)	7	4	16 (*2)	10	6	990C0-88110-000
	⑧	Terminator Female	0	1	1	1	1	1	1	1	1	1	1	1	1	1	1	990C0-88113-000
	⑨	Terminator Male	0	1	1	1	1	1	1	1	1	1	1	1	1	1	1	990C0-88114-000
		Adapter Harness to N network (Black network to Blue devices)	0															990C0-88029-000
		Adapter Harness to L network (Blue network to Black devices)	0															990C0-88137-000
sensor		Fluid Level Sensor	1			(1)	(1)	(1)	(1)			(1)			(1)			990C0-88116-000
		Speed Sensor	1			(1)	(1)	(1)	(1)			(1)			(1)			990C0-88117-000
		Water Temperature Sensor	1			(1)	(1)	(1)	(1)			(1)			(1)			990C0-88118-000
		Water Temperature Sensor (Thru-Hull type)	1			(1)	(1)	(1)	(1)			(1)			(1)			990C0-88119-000
		Water Pressure Sensor	1			(1)	(1)	(1)	(1)			(1)			(1)			990C0-88139-000
		GPS Receiver Module	1			(1)	(1)	(1)	(1)			(1)			(1)			990C0-88120-000
optional trim		4" bezel, chrome	0															990C0-88021-6PK
		4" bezel, white	0															990C0-88023-6PK
		2" bezel, chrome	0															990C0-88025-6PK
		2" bezel, white	0															990C0-88027-6PK
adapter cable	⑪	SMIS adapter (*3)	0			1	2	3	1	1	2	2		3	3		36660-89L01-000	

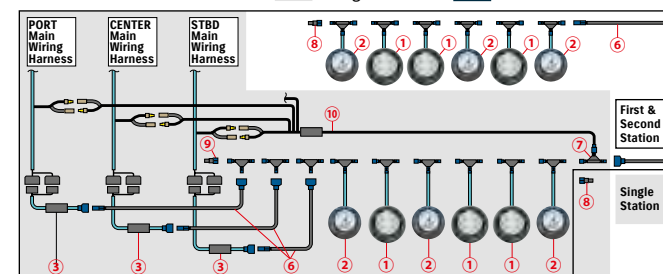
SINGLE ENGINE OF DF9.9B-250



DUAL ENGINE OF DF9.9B-250



TRIPLE ENGINE OF DF9.9B-250



# ANALOG INSTRUMENT

Caution lamp	Caution type
CHECK ENGINE	Low battery-voltage or Other cautions on S.D.S
TEMP	Overheat ( Over-revolution )

Caution lamp	Caution type
OIL	Low oil-pressure ( Over-revolution )
REV LIMIT	Oil change reminder
	Over-revolution

## TACHOMETER



White



Black

**34200-93J12-000** (White) 021 **34200-93J00-000** (Black) 022

Gauge Size 4"

Applicable Model DF25A-250

Caution systems alert with a monitor lamp lighting on when an abnormal engine condition occurs. Refer to SERVICE MANUAL for the detail.



White



Black

**34200-93J51-000** (White) 023 **34200-93J40-000** (Black) 024

Gauge Size 4"

Applicable Model DF40A-140/200A

Exclusive for SUZUKI Troll Mode System. Automatically switches to low RPM scale when the SUZUKI Troll Mode System is activated.



White



Black

**34200-93J32-000** (White) 025 **34200-93J20-000** (Black) 026

Gauge Size 4"

Applicable Model DF8-30A, DT30/40W

Full-scale 7000-RPM TACHOMETER can be used on electric-start models by using 4, 6 or 12 pole switch on rear of meter.

## TRIM GAUGE



White



Black

**34800-93J11-000** (White) 027  
**34800-93J00-000** (Black) 028

Gauge Size 2"

Applicable Model DF25A-250

Magnetic-type gauge shows trim angle for optimum performance and efficiency.

## FUEL GAUGE



White



Black

**34300-93J11-000** (White) 029  
**34300-93J00-000** (Black) 030

Gauge Size 2"

Applicable Model DF8A-250, DT30/40

FUEL GAUGE alone works with the US Standard 250Q sending unit. Use the 150Q adaptor to connect the gauge to a European standard sending unit.

## HOUR METER



White



Black

**34500-93J11-000** (White) 031  
**34500-93J00-000** (Black) 032

Gauge Size 2"

Applicable Model DF8A-250, DT30/40

12-volt-electric-motor-driven meter indicates hours that your outboard motor has been operated in order for you to know when each periodic service is required.

## VOLTMETER



White



Black

**34600-93J11-000** (White) 033  
**34600-93J00-000** (Black) 034

Gauge Size 2"

Applicable Model DF8A-250, DT30/40

To help your SUZUKI OUTBOARD MOTOR run at its best, monitor the charging system functioning with a VOLTMETER.

## WATER-PRESSURE GAUGE



White



Black

**34650-93J31-000** (White) 035  
**34650-93J20-000** (Black) 036

Gauge Size 2"

Applicable Model DF40A-250

Bourdon-tube type gauge measures cooling-water pressure. Select an appropriate INSTALLATION KIT for each model.

**SPEEDOMETER**



White

Black

**34100-93J11-000** 037

**34100-93J00-000** 038

Gauge Size 4"

Maximum Speed 130km/h, 80mph

Bourdon-tube type speedometer with readings in km/h and mph. Includes vinyl tube, hardware and installation manual.



White

Black

**34100-93J31-000** 039

**34100-93J20-000** 040

Gauge Size 4"

Maximum Speed 80km/h, 50mph

Bourdon-tube type speedometer with readings in km/h and mph. Includes vinyl tube, hardware and installation manual.



White

Black

**34100-93J51-000** 041

**34100-93J40-000** 042

Gauge Size 4"

Maximum Speed 80km/h, 45knots

Bourdon-tube type speedometer with readings in km/h and knots. Includes vinyl tube, hardware and installation manual.



**34100-93J60-000** 043

Gauge Size 4"

Background White

Maximum Speed 120km/h, 65knots

Bourdon-tube type speedometer with readings in km/h and knots. Includes vinyl tube, hardware and installation manual.

**SPEEDOMETER SENDER ASSY**



**34190-95500-000** 044

Applicable Model DF9.9BT-20AT/25R/40AT-300AP, DT30R/40WR



**34190-87D00-000** 045

Applicable Model DF9.9BT-20AT/25R/40AT-140AT/Z/150T/Z/175T/Z/200T/Z-250T/Z, DT30R/40WR

**INSTALLATION KIT for WATER-PRESSURE GAUGE**



**34660-90J02-000**

Applicable Model DF40A-140A

**34660-93J00-000** 046

Applicable Model DF200-250

KIT includes fittings and hoses needed for motor to gauge connection.

**34660-96J00-000**

Applicable Model DF150-175/200A

# ELECTRONIC THROTTLE AND SHIFT SYSTEM

- Computerized Drive by Wire system of the Suzuki Precision Control (S.P.C.) eliminates wiring friction losses and allows smooth and superior handling. As a result, SPC makes smooth and linear control from start and at low speed.
- By the control panel operation (included remote-control kits), you can start and stop the engine and change a steering station with multiple engines you can control the synchronization of an engine rev and change the tilt angles.
- Not only DF300AP/250AP/200AP, but also DF150TG/ZG, DF175TG/ZG are suitable for this system.
- Chrome plating finish for better rust resistance.
- applicable to maximum 2 station and maximum 4 engines.
- 8 kinds of rigging parts kits are available for your convenience to select all necessary parts for your requirements.



67200-98J03-000  
BINNACLE MOUNT R/C BOX  
for SINGLE ENGINE **047**



67200-98J22-000  
FLUSH MOUNT R/C BOX  
for SINGLE ENGINE **048**



67200-98J13-000  
BINNACLE MOUNT R/C BOX  
for DUAL ENGINE **049**

REMOTE-CONTROL KIT for <b>SINGLE ENGINE</b>				KIT			Total Required Quantity	
				1st Station		2nd Station		
				PART NUMBER	PART NAME	LENGTH	67000-98J09-000 BINNACLE-MOUNT CONTROL KIT	67000-98J68-000 FLUSH-MOUNT CONTROL KIT
①	67200-98J03-000 <b>047</b>	BINNACLE MOUNT R/C BOX		1	—	1	1	2
	67200-98J22-000 <b>048</b>	FLUSH MOUNT R/C BOX		—	1	—		
②	37100-98J11-000 <b>051</b>	CONTROL PANEL		1	1	1	1	2
③	37100-98J04-000 <b>050</b>	MAIN SWITCH PANEL		1	1	—	1	1
④	37860-87L00-000 <b>080</b>	TROLL MODE SWITCH PANEL		1	1	1	1	2
⑤	38500-93J90-000 <b>082</b>	WARNING BUZZER		1	1	1	1	2
	09407-08401-000	WARNING-BUZZER CLAMP		1	1	1	1	2
⑥	36770-98J10-000 <b>054</b>	BOAT CONTROL MODULE		1	1	1	1	2
	36775-98J00-000 <b>055</b>	BCM HOLDER (L)		1	1	1	1	2
	36776-98J00-000 <b>056</b>	BCM HOLDER (R)		1	1	1	1	2
	33911-88BLO-000 <b>057</b>	BCM-CONNECT CAP		1	1	1	1	2
	33925-93J00-000 <b>058</b>	BCM CUSHION		1	1	1	1	2
⑦	33926-98J00-000 <b>064</b>	TERMINAL RESISTOR		2	2	—	2	2
⑧	36625-98J10-000 <b>063</b>	BATTERY-LEAD		1	1	—	1	1
⑨	36623-98J20-000 <b>065</b>	BCM #1 WIRING HARNESS		1	1	—	1	1
⑩	36622-98J00-000 <b>062</b>	DUAL-STATION WIRING HARNESS		—	—	1	—	1
⑪	36624-98J02-000 <b>066</b>	BCM #2 WIRING HARNESS		—	—	1	—	1
⑫	37803-93J04-000 <b>076</b>	EMERGENCY SWITCH PANEL		—	—	1	—	1
—	09403-13402-000	HARNES CLAMP		10	10	10	—	—
*⑬	36620-98J30-000 <b>059</b>	MAIN WIRING HARNESS	6.5m				1	2
	36620-98J40-000		9.5m					
	36620-98J50-000 <b>060</b>	MAIN WIRING HARNESS EXTENSION	2.0m				—	—

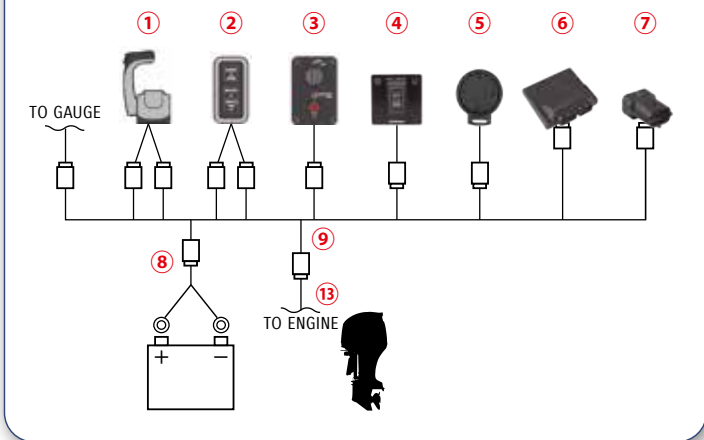
\*⑬ is not included these kits. Please purchase these items separately

REMOTE-CONTROL KIT for <b>DUAL ENGINE</b>				KIT		Total Required Quantity		
				1st Station	2nd Station			
				PART NUMBER	PART NAME	LENGTH	67000-98J29-000 BINNACLE-MOUNT CONTROL KIT	67000-98J39-000 2ND-STATION CONTROL KIT
①	67200-98J13-000 <b>049</b>	BINNACLE MOUNT R/C BOX		1	1	1	2	
②	37100-98J21-000 <b>052</b>	CONTROL PANEL		1	1	1	2	
③	37100-98J04-000 <b>050</b>	MAIN SWITCH PANEL		1	1	1	1	
④	37860-87L00-000 <b>080</b>	TROLL MODE SWITCH PANEL		1	1	1	2	
⑤	38500-93J90-000 <b>082</b>	WARNING BUZZER		1	1	1	2	
	09407-08401-000	WARNING-BUZZER CLAMP		1	1	1	2	
⑥	36770-98J10-000 <b>054</b>	BOAT CONTROL MODULE		1	1	1	2	
	36775-98J00-000 <b>055</b>	BCM HOLDER (L)		1	1	1	2	
	36776-98J00-000 <b>056</b>	BCM HOLDER (R)		1	1	1	2	
	33911-88BLO-000 <b>057</b>	BCM-CONNECT CAP		1	1	1	2	
	33925-93J00-000 <b>058</b>	BCM CUSHION		1	1	1	2	
⑦	33926-98J00-000 <b>064</b>	TERMINAL RESISTOR		2	—	2	2	
⑧	36625-98J10-000 <b>063</b>	BATTERY-LEAD		1	—	1	1	
⑨	36623-98J30-000	BCM #1 WIRING HARNESS		1	—	1	1	
⑩	36622-98J00-000 <b>062</b>	DUAL-STATION WIRING HARNESS		—	1	—	1	
⑪	36624-98J11-000	BCM #2 WIRING HARNESS		—	1	—	1	
⑫	37803-93J04-000 <b>076</b>	EMERGENCY SWITCH PANEL		—	1	—	1	
—	36621-98J00-000 <b>061</b>	ENGINE WIRING HARNESS		1	—	1	1	
—	09403-13402-000	HARNES CLAMP		15	10	—	—	
*⑬	36620-98J30-000 <b>059</b>	MAIN WIRING HARNESS	6.5m				1	2
	36620-98J40-000		9.5m					
	36620-98J50-000 <b>060</b>	MAIN WIRING HARNESS EXTENSION	2.0m				—	—

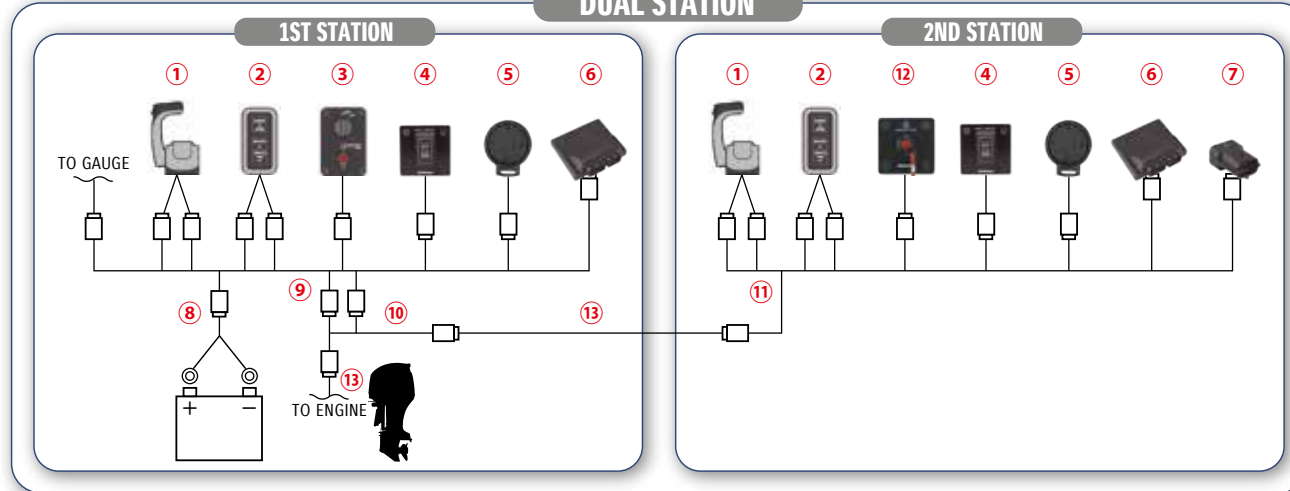
\*⑬ is not included these kits. Please purchase these items separately



**SINGLE STATION**



**DUAL STATION**



**REMOTE-CONTROL KIT for TRIPLE ENGINE**

	PART NUMBER	PART NAME	LENGTH	KIT		Total Required Quantity	
				1st Station 67000-98J48-000 BINNACLE-MOUNT OR FLUSH-MOUNT CONTROL KIT	2nd Station 67000-98J58-000 2ND-STATION CONTROL KIT	SINGLE STATION	DUAL STATION
①	67200-98J13-000	049 BINNACLE MOUNT R/C BOX		1	1	1	2
②	37100-98J31-000	053 CONTROL PANEL		1	1	1	2
③	37100-98J04-000	050 MAIN SWITCH PANEL		1	-	1	1
④	37860-87L00-000	080 TROLL MODE SWITCH PANEL		1	1	1	2
⑤	38500-93J90-000	082 WARNING BUZZER		1	1	1	2
	09407-08401-000	WARNING-BUZZER CLAMP		1	1	1	2
	36770-98J10-000	054 BOAT CONTROL MODULE		1	1	1	2
	36775-98J00-000	055 BCM HOLDER (L)		1	1	1	2
⑥	36776-98J00-000	056 BCM HOLDER (R)		1	1	1	2
	33911-88BLO-000	057 BCM-CONNECT CAP		1	1	1	2
	33925-93J00-000	058 BCM CUSHION		1	1	1	2
⑦	33926-98J00-000	064 TERMINAL RESISTOR		2	-	2	2
⑧	36625-98J10-000	063 BATTERY-LEAD		1	-	1	1
⑨	36623-98J30-000	BCM #1 WIRING HARNESS		1	-	1	1
⑩	36622-98J00-000	062 DUAL-STATION WIRING HARNESS		-	1	-	1
⑪	36624-98J11-000	BCM #2 WIRING HARNESS		-	1	-	1
⑫	37803-93J04-000	076 EMERGENCY SWITCH PANEL		-	1	-	1
-	36621-98J00-000	061 ENGINE WIRING HARNESS		1	-	1	1
-	09403-13402-000	HARNESS CLAMP		18	10	-	-
*⑬	36620-98J30-000	059 MAIN WIRING HARNESS	6.5m			1	2
	36620-98J40-000	9.5m					
	36620-98J50-000	060 MAIN WIRING HARNESS EXTENSION	2.0m			-	-

\*⑬ is not included these kits. Please purchase these items separately

**REMOTE-CONTROL KIT for QUADRUPLE ENGINE**

	PART NUMBER	PART NAME	LENGTH	KIT		Total Required Quantity	
				1st Station 67000-98J70-000 BINNACLE-MOUNT OR FLUSH-MOUNT CONTROL KIT	2nd Station 67000-98J80-000 2ND-STATION CONTROL KIT	SINGLE STATION	DUAL STATION
①	67200-98J13-000	049 BINNACLE MOUNT R/C BOX		1	1	1	2
②	37100-98J21-000	052 CONTROL PANEL		2	2	2	4
③	37100-98J04-000	050 MAIN SWITCH PANEL		1	-	1	1
④	37860-87L00-000	080 TROLL MODE SWITCH PANEL		1	1	1	2
⑤	38500-93J90-000	082 WARNING BUZZER		2	2	2	4
	09407-08401-000	WARNING-BUZZER CLAMP		2	2	2	4
	36770-98J20-000	BOAT CONTROL MODULE		2	2	2	4
	36775-98J00-000	055 BCM HOLDER (L)		2	2	2	4
⑥	36776-98J00-000	056 BCM HOLDER (R)		2	2	2	4
	33911-88BLO-000	057 BCM-CONNECT CAP		2	2	2	4
	33925-93J00-000	058 BCM CUSHION		2	2	2	4
⑦	33926-98J00-000	064 TERMINAL RESISTOR		4	-	4	4
⑧	36625-98J10-000	063 BATTERY-LEAD		2	-	2	2
⑨	36623-98J40-000	BCM #1 WIRING HARNESS		1	-	1	1
⑩	36622-98J00-000	062 DUAL-STATION WIRING HARNESS		-	2	-	2
⑪	36623-98J40-000	BCM #2 WIRING HARNESS		-	1	-	1
⑫	37803-93J04-000	076 EMERGENCY SWITCH PANEL		-	1	-	1
-	36621-98J00-000	061 ENGINE WIRING HARNESS		2	-	2	2
-	09403-13402-000	HARNESS CLAMP		20	15	-	-
*⑬	36620-98J30-000	059 MAIN WIRING HARNESS	6.5m			2	4
	36620-98J40-000	9.5m					
	36620-98J50-000	060 MAIN WIRING HARNESS EXTENSION	2.0m			-	-

\*⑬ is not included these kits. Please purchase these items separately

# COMPONENT OF SUZUKI PRECISION CONTROL

Applicable model  
DF150TG/ZG/175TG/ZG/200AP/250AP/300AP

## MAIN SWITCH PANEL



**37100-98J04-000** 050

Single ignition with Emergency-stop switch

## CONTROL PANEL



**37100-98J11-000** 051

for Single-Engine



**37100-98J21-000** 052

for Dual-Engine



**37100-98J31-000** 053

for Triple-Engine

## BOAT CONTROL MODULE (BCM)



**36770-98J10-000** 054

**36770-98J20-000**  
for Quadruple engines

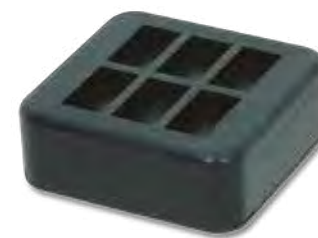
## BCM HOLDER (L/R)



**36775-98J00-000** 055

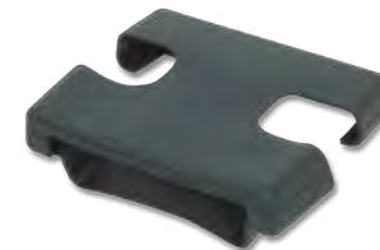
**36776-98J00-000** 056

## BCM-CONNECT CAP



**33911-88BLO-000** 057

## BCM CUSHION



**33925-93J00-000** 058

**MAIN WIRING HARNESS**



**36620-98J30-000** 059  
6.5 meters for control system

**36620-98J40-000**  
9.5 meters for control system

**MAIN-WIRING-HARNESS EXTENSION**



**36620-98J50-000** 060  
2.0 meters for control system

**ENGINE WIRING HARNESS**



**36621-98J00-000** 061  
for Dual engines

**36621-98J10-000**  
for Triple engines

**DUAL-STATION WIRING HARNESS**



**36622-98J00-000** 062  
for Dual-station control system

**BATTERY LEAD**



**36625-98J10-000** 063  
6.5 meters

**TERMINAL RESISTOR**



**33926-98J00-000** 064

**BCM #1 WIRING HARNESS**



**36623-98J20-000** 065  
for Single engine and Single (First) station

**36623-98J30-000**  
for Dual or Triple engines and Single (First) station

**36623-98J40-000**  
for Quadruple engines

**BCM #2 WIRING HARNESS**



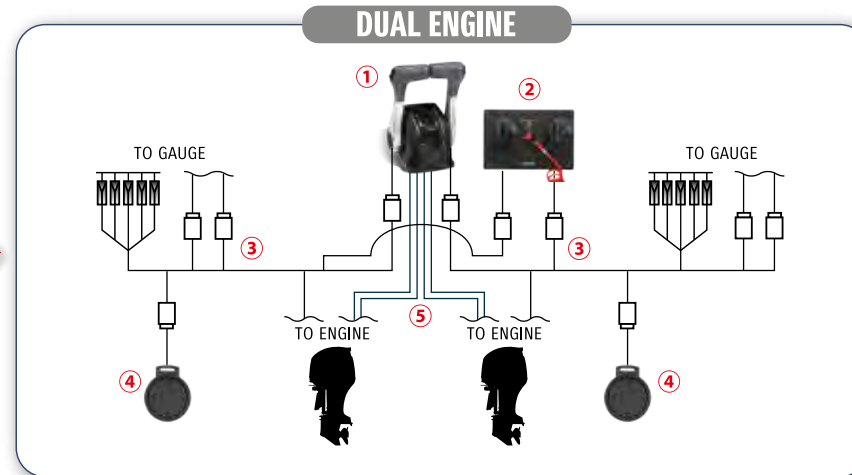
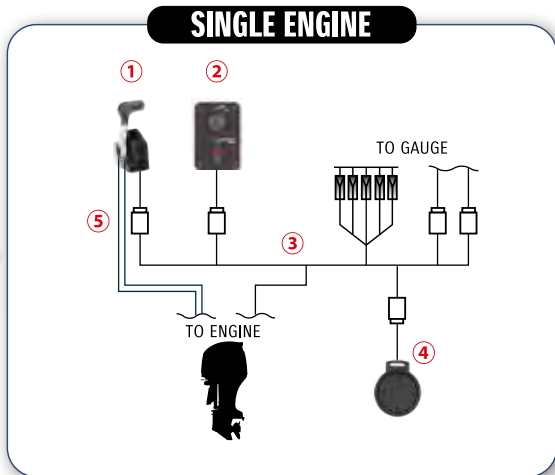
**36624-98J02-000** 066  
for Single engine and Second station

**36624-98J11-000**  
for Dual or Triple engines and Second station

**36623-98J40-000**  
for Quadruple engines and Second station



# MECHANICAL REMOTE CONTROL SYSTEM



REMOTE-CONTROL KIT for SINGLE ENGINE + SINGLE STATION				KIT					Total Required Quantity
PART NUMBER	PART NAME	LENGTH	1st Station	1st Station	1st Station	1st Station	1st Station		
			67000-93J05-000 BINNACLE-MOUNT CONTROL KIT	67000-93J49-000 BINNACLE-MOUNT CONTROL KIT	67000-93J26-000 FLUSH-MOUNT CONTROL KIT	67000-93J90-000 FLUSH-MOUNT CONTROL KIT	67000-93J80-000 SIDE-MOUNT CONTROL KIT		
① 67200-93J13-000 067	BINNACLE MOUNT R/C BOX		1	1	—	—	—	1	
67200-93J32-000 069	FLUSH MOUNT R/C BOX		—	—	1	1	—	1	
67200-93J50-000	SIDE MOUNT R/C BOX		—	—	—	—	1	1	
37803-93J04-000 076	EMERGENCY SWITCH PANEL		—	—	—	—	—	—	
37803-99E04-000	EMERGENCY SWITCH PANEL		—	—	—	—	—	—	
37100-96J00-000 075	IGNITION SWITCH PANEL		—	—	—	—	—	1	
37100-96J24-000 077	SINGLE IGNITION WITH E/S SWITCH		1	1	1	1	※1	1	
36620-93J02-000 073	MAIN WIRING HARNESS	6.5m	—	1	—	1	1	1	
36620-93J52-000		5.0m	—	—	—	—	—	1	
36620-93J62-000		8.0m	—	—	—	—	—	1	
36620-94J01-000		6.5m	—	—	—	—	—	1	
34200-93J12-000 021	TACHOMETER (FACE : WHITE)		—	1	—	1	1	—	
34800-93J11-000 027	TRIM GAUGE (FACE : WHITE)		—	1	—	1	1	—	
④ 38500-93J90-000 082	WARNING BUZZER		—	—	—	—	※1	1	
09407-08401-000	WARNING-BUZZER CLAMP		—	—	—	—	※1	1	
67320-93J00-000 084	R/C CABLE (FOR THROTTLE AND SHIFT CABLES)	8ft. / 2.44m	—	—	—	—	—	—	
67320-93J10-000		10ft. / 3.05m	—	—	—	—	—	—	
67320-93J20-000		12ft. / 3.66m	—	—	—	—	—	—	
67320-93J30-000		14ft. / 4.27m	—	—	—	—	—	—	
⑤ 67320-93J40-000		16ft. / 4.88m	—	—	—	—	—	2	
67320-93J50-000		18ft. / 5.49m	—	—	—	—	—	—	
67320-93J60-000		20ft. / 6.10m	—	—	—	—	—	—	
67320-93J70-000		22ft. / 6.71m	—	—	—	—	—	—	
67320-93J80-000	24ft. / 7.32m	—	—	—	—	—	—		
36620-93J10-000	MAIN WIRING HARNESS EXTENSION	2m	—	—	—	—	—	—	
36620-93J40-000		3m	—	—	—	—	—	—	
37860-87L00-000 080	TROLL MODE SWITCH PANEL		—	—	—	—	※2	—	

REMOTE-CONTROL KIT for DUAL ENGINE + SINGLE STATION				KIT			Total Required Quantity
PART NUMBER	PART NAME	LENGTH	1st Station	1st Station	Total Required Quantity		
			990C0-93J14-000 BINNACLE-MOUNT CONTROL KIT	67000-93J14-000 BINNACLE-MOUNT CONTROL KIT			
① 67200-93J23-000 068	BINNACLE MOUNT R/C BOX		1	1	1		
② 37100-96J14-000 078	DUAL IGNITION WITH E/S SWITCH		1	1	1		
36620-93J02-000 073	MAIN WIRING HARNESS	6.5m	—	2	—		
36620-93J52-000		5.0m	—	—	2		
36620-93J62-000		8.0m	—	—	—		
36620-94J01-000		6.5m	—	—	—		
34200-93J12-000 021	TACHOMETER (FACE : WHITE)		—	2	—		
34800-93J11-000 027	TRIM GAUGE (FACE : WHITE)		—	2	—		
④ 38500-93J90-000 082	WARNING BUZZER		—	—	2		
09407-08401-000	WARNING-BUZZER CLAMP		—	—	2		
67320-93J00-000 084	R/C CABLE (FOR THROTTLE AND SHIFT CABLES)	8ft. / 2.44m	—	—	—		
67320-93J10-000		10ft. / 3.05m	—	—	—		
67320-93J20-000		12ft. / 3.66m	—	—	—		
67320-93J30-000		14ft. / 4.27m	—	—	—		
⑤ 67320-93J40-000		16ft. / 4.88m	—	—	4		
67320-93J50-000		18ft. / 5.49m	—	—	—		
67320-93J60-000		20ft. / 6.10m	—	—	—		
67320-93J70-000		22ft. / 6.71m	—	—	—		
67320-93J80-000	24ft. / 7.32m	—	—	—			
36620-93J10-000	MAIN WIRING HARNESS EXTENSION	2m	—	—	—		
36620-93J40-000		3m	—	—	—		
37860-87L00-000 080	TROLL MODE SWITCH PANEL		—	※2	—		

These accessories in yellow painted are optional ones. Please select your best one depending on your rigging system.

※1 The side mount control box is equipped with an ignition switch, an emergency switch and warning buzzer with clamp.

※2 For more accurate speed control, please purchase the TACHOMETER (34200-93J50(40)) separately.

**BINNACLE-MOUNT REMOTE CONTROL BOX**



**67200-93J13-000** 067  
Single-engine  
Applicable Model DF8A-250



**67200-93J23-000** 068  
Dual-engine  
Applicable Model DF8A-250

**FLUSH-MOUNT REMOTE CONTROL BOX**



**67200-93J32-000** 069  
Single-engine  
Applicable Model DF8A-250

**SIDE-MOUNT REMOTE CONTROL BOX**



**67200-91J20-000**  
Single-engine  
Applicable Model DF4-6

**67200-94J20-000** 070  
Single-engine with warning buzzer  
Applicable Model DF8A-30A

**67200-93J50-000**  
Single-engine with PTT switch  
Applicable Model DF9.9B-250

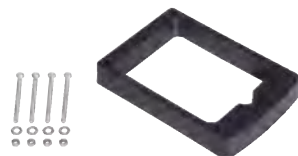
**67200-89E40-000**  
Single-engine with warning buzzer  
Applicable Model DT30/40W

**CONNECTION between ENGINE and CONTROL SYSTEM**

**SPACER KIT for REMOTE CONTROL BOX**



**67500-93J00-000** 071  
for Single Binnacle-mount type  
Applicable Model DF8A-250



**67500-93J10-000** 072  
for Dual Binnacle-mount type  
Applicable Model DF8A-250

**MAIN WIRING HARNESS**



**36620-93J52-000**  
5.0 meters for Control system  
Applicable Model DF40A-250

**36620-93J02-000** 073  
6.5 meters for Control system  
Applicable Model DF40A-250

**36620-93J62-000**  
8.0 meters for Control system  
Applicable Model DF40A-250

**36620-94J01-000**  
6.5 meters for Control system without  
Monitor-signal wire,  
Trim-sender wire and PTT-SW wire  
Applicable Model DF8A/9.9B/15A/20A

**36620-94L10-000**  
5.0 meters for Control system without  
Trim-sender wire and PTT-SW wire  
Applicable Model DF25A/30A

**MAIN WIRING HARNESS EXTENSION**

**36620-93J10-000**  
2.0 meters for Control system  
Applicable Model DF9.9B-250

**36620-93J40-000**  
3.0 meters for Control system  
Applicable Model DF9.9B-250

**BATTERY LEAD**



**36625-93J10-000** 074  
6.7 meters  
Applicable Model DF70-90A/150/175/200A/  
200-250

**36625-93J00-000**  
3.9 meters  
Applicable Model DF70-90A/150/175/200A/  
200-250

# COMPONENT OF MECHANICAL REMOTE CONTROL SYSTEM

## IGNITION SWITCH PANEL



**37100-96J00-000** 075

Single ignition  
Applicable Model DF9.9B-250

**37100-99E00-000**

Single ignition  
Applicable Model DT30

## EMERGENCY SWITCH PANEL



**37803-93J04-000** 076

Applicable Model DF9.9B-300AP

**37803-99E04-000**

Applicable Model DT30

## LIGHTING SWITCH PANEL



**37210-93J00-000** 079

Applicable Model DF9.9B-250, DT30/40W

## IGNITION SWITCH PANEL



**37100-96J24-000** 077

Single ignition with  
Emergency-stop switch  
Applicable Model DF9.9B-250

## IGNITION SWITCH PANEL



**37100-96J14-000** 078

Dual ignition with  
Emergency-stop switch  
Applicable Model DF9.9B-250

## TROLL MODE SWITCH PANEL



**37860-87L00-000** 080

Applicable Model DF40A-140A/150TG/ZG/  
175TG/ZG/200A/AP/250AP/  
300AP

Activates SUZUKI Troll Mode System and controls RPM from idling engine speed up to 1200rpm at every 50rpm.

## PTT SWITCH PANEL



**37805-93J00-000** 081

Applicable Model DF40A-250

**WARNING BUZZER**



**38500-93J90-000** 082

Applicable Model DF9.9B-300AP

**REMOTE-CONTROL CABLE**



**67320-93J40-000**

16 feet 4.88 meters

Applicable Model DF4-250, DT30/40W

**67320-93J50-000**

18 feet 5.49 meters

Applicable Model DF4-250, DT30/40W

**67320-93J60-000**

20 feet 6.10 meters

Applicable Model DF4-250, DT30/40W

**67320-93J70-000**

22 feet 6.71 meters

Applicable Model DF4-250, DT30/40W

**67320-93J80-000**

24 feet 7.32 meters

Applicable Model DF4-250, DT30/40W

GENUINE REMOTE-CONTROL CABLES employ the latest in cable technology. The inner core is encased in nylon, and travels back and forth in a high-density polyethylene liner.

**THRU-HULL-HOSE ATTACHMENT**



**67300-90J00-000**

Applicable Model DF70A-140A

**67300-93J00-000** 083

Applicable Model DF150-300AP

**67320-93J00-000** 084

8 feet 2.44 meters

Applicable Model DF4-250, DT30/40W

**67320-93J10-000**

10 feet 3.05 meters

Applicable Model DF4-250, DT30/40W

**67320-93J20-000**

12 feet 3.66 meters

Applicable Model DF4-250, DT30/40W

**67320-93J30-000**

14 feet 4.27 meters

Applicable Model DF4-250, DT30/40W

**THRU-HULL FITTING AND HOSE KIT**



**990C0-20010-000**

Single, dual, triple engine installations. One kit is necessary for each engine used. When attaching the rigging tube to the engine, adapter kit 67300-90J00-000/67300-93J00-000 is also required for each engine.

Applicable Model DF70AT-140T/Z, DF150T/Z-300T/Z (model year 2006-)

**TWIN REMOCON ATTACHMENT KIT**



**67140-95600-000** 085

Applicable Model DF8A-250, DT30/40W

**REMOTE-CONTROL ATTACHING KIT**

Converts ME model to REMOTE-CONTROL model.



**67101-91J00-000** 086

Applicable Model DF4-6

**67130-94L00-000**

Applicable Model DF25A/30A

**67130-94L10-000**

Applicable Model DF25ATH/DF30ATH

**67130-99J00-000**

CLAMP BRACKET SET (41100-99J00-0EP) is required for installing 67130-99J00-000.

Applicable Model DF8A/9.9A

**67130-89L02-000**

Applicable Model DF9.9B/15A/20A

**CLAMP BRACKET SET**

**41100-99J00-0EP**

Applicable Model DF8A/9.9A

# STEERING

## TILLER HANDLE KIT



**63002-88L21-0EP** 087

Applicable Model DF40A/50A

**63002-88L11-0EP** 088

Applicable Model DF60A/50AV/60AV

**63002-87L12-0EP** 089

Applicable Model DF70A-90A

**63002-90J31-0EP** 090

with Adjustable Steering Damper

Applicable Model DF100A/115A

## Main features



Tachometer with warning indicators



Three position angle adjustable bracket



Troll mode switch

- Activates SUZUKI Troll Mode System and controls RPM from idling engine speed up to 1200rpm at every 50rpm.



Power trim & tilt switch and throttle grip friction adjuster



**TILLER HANDLE KIT**



The conventional kits are also applicable.

**63002-88L07-0EP**

Applicable Model DF40A-60A

**63002-87L04-0EP**

Applicable Model DF70A-90A

**63002-90J26-0EP** 091

with Adjustable Steering Damper

Applicable Model DF100A/115A

CONTENTS: Ignition switch, Engine-stop switches, Wiring harness, Cables and grommets  
TILLER HANDLE KITS are designed for easy installation for selected electric start models.

**DUAL-ENGINE TIE-BAR**



**67600-90J00-000** 092

Stainless steel

Applicable Model DF100A-140A

**67600-93J00-000**

Stainless steel

Applicable Model DF150-250

**STEERING EXTENSION KIT**



**67630-93J00-000** 093

for installation of DUAL-ENGINE TIE-BAR (67600-93J00-000)

Applicable Model DF150-250

**STEERING CABLE SEAL**



**41161-94400-000** 094

Applicable Model DF8A-250, DT25K-40W

**STEERING-BRACKET ATTACHMENT**



**43755-87L00-000** 095

Applicable Model DF70A/90A

**43755-88L00-0EP**

Applicable Model DF40A-60A

**43755-94L00-000**

Applicable Model DF25A-30A

**43755-99J00-000**

Applicable Model DF8A-20A

**43755-96320-000**

Applicable Model DT25K/30/40W

**DRAG-LINK KIT**



**67700-87L01-000** 096

Applicable Model DF70A-90A

**67700-93J00-000**

Applicable Model DF40A-60A/200-250

**67700-96J00-000**

Applicable Model DF150-175/200A/AP

**67701-87J11-000**

Applicable Model DF40A-60A/200-250

**67701-87L01-000**

Applicable Model DF70A-90A

**67701-90J01-000**

Applicable Model DF100A-140A

**67701-96J00-000**

Applicable Model DF150-175/200A/AP

**67701-94420-000**

Applicable Model DT25K/30

**67701-94L00-000**

Applicable Model DF25A/30A

**67701-99J02-000**

Applicable Model DF8A-DF20A

## Recommended STEERING SYSTEM supplied by



SEASTAR SOLUTIONS®

www.seastarsolutions.com

Order taking, delivery, technical support and warranty for these products are handled by SeaStar Solutions.

Please consult to local SeaStar Solutions distributor or dealer if you need more detail for product information, price, availability and all business terms.

### STEERING KIT

#### BAYSTAR™



#### BAYSTAR

##### BAYSTAR OUTBOARD SYSTEM - HK4645H

System comprises:	
BayStar Helm 1.4cu" (22.94cc)	HH4314
BayStar Compact Cylinder	HC4645H*
20ft "cut to length" tubing kit	HT4420H
2 x 1 litre hydraulic oil	HO5430

\*Note: 115-140hp four stroke 2001 to current model require HC4658H.

#### SEASTAR™



#### SEASTAR

##### SEASTAR OUTBOARD SYSTEM - HK6400

System comprises:	
SeaStar Helm 1.7cu" (27.80cc)	HH5271
SeaStar Pivot Cylinder	HC5345*
2 x 1 litre hydraulic oil	HO5430
Note: 1 x SeaStar hose kits must be ordered separately	

\*Note: 115-140hp 1996 only requires HC5348, 40-140hp four stroke 1998 to current model and 90hp four stroke 2003 to current model require HC5358.

#### SEASTAR™ PA



#### SEASTAR POWER ASSIST

##### SEASTAR OUTBOARD POWER ASSIST SYSTEM

System comprises:	
SeaStar Helm 1.7cu" (27.80cc)	HH5271
SeaStar Pivot Cylinder	HC5345*
2 x 1 litre hydraulic oil	HO5430
SeaStar 12v Power Assist Unit	PA1200-2
Note: 2 x SeaStar hose kits must be ordered separately	

\*Note: 115-140hp 1996 only requires HC5348, 40-140hp four stroke 1998 to current model and 90hp four stroke 2003 to current model require HC5358.

\*For further application information please refer to [www.seastarsolutions.com](http://www.seastarsolutions.com)

		75 HP	115 HP	150 HP	200 HP	250 HP	300 HP	300 HP+	
BAYSTAR	OPTIMUM	[Bar]							
	MAXIMUM	[Bar]							
SEASTAR OUTBOARD SYSTEM	OPTIMUM			[Bar]					
	MAXIMUM	[Bar]							
SEASTAR POWER ASSIST OUTBOARD SYSTEM	OPTIMUM			[Bar]					
	MAXIMUM	[Bar]							

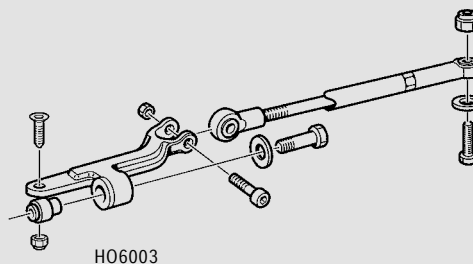
As specialists in the art of steering, SeaStar Solutions take the recommendation of steering systems very seriously especially as modern outboard engines become more powerful. Unlike other steering manufacturers we prefer to make systems recommendations based on "optimum comfort"

## TIE-BAR KIT

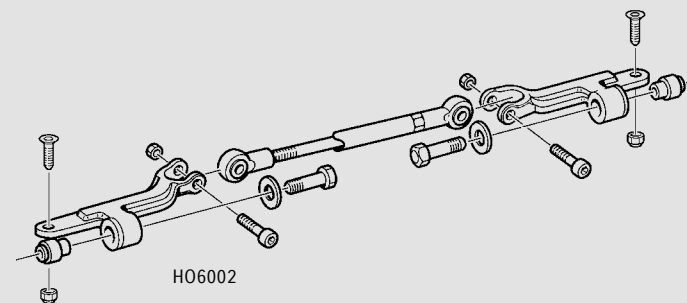
### Features

General purpose system.  
Single and multiple engine capability.  
Total power up to 700 HP  
\*counter-rotating.

Independent engine tilt for twin engine  
Easy steering.  
5 turns lock to lock steering response.



HO6003



HO6002

### Applications

#### Twin Engine Application for Suzuki Outboard Motors

MODEL (4-CYCLE)	CYLINDER	TIE BAR KITS		NOTES
		TWIN ENGINE SINGLE CYL.	TWIN ENGINE DUAL CYL.	
DF40A/50A/60A	HC5358	HO6003	HO6002	Requires kit HO5090
DF70A/80A/90A	HC5358	HO6003	HO6002	Requires kit HO5090
DF100	HC5358	HO6003	HO6002	Requires kit HO5090
DF115/140	HC5358	HO6003	HO6002	Requires kit HO5090
DF150/175	HC5345	HO6003	HO6002	
DF200/225/250	HC5345	HO6003	HO6002	
DF300	HC5345	HO6003	HO6002	

#### Triple Engine Configuration for Suzuki Outboard Motors

MODEL (4-CYCLE)	CYLINDER	TIE BAR KITS		NOTES
		PORT ENGINE TO DRIVE CYL.	STARBOARD ENGINE TO DRIVE CYL.	
DF150/175	HC5345	HO6003	HO6002	See notice
DF200/225/250	HC5345	HO6003	HO6002	See notice
DF300	HC5345	HO6003	HO6002	See notice

# ELECTRICAL PARTS

## ELECTRIC STARTER KIT



**31000-94L01-000** 097

Applicable Model DF25A/30A

**31000-99J00-000**

Applicable Model DF8A/9.9A

**31000-89L02-000**

Applicable Model DF9.9B/15A/20A  
Converts MZ model into ME model.

## BATTERY CHARGING KIT

**32000-91J13-000**

80W

Applicable Model DF4-6

**32000-94L00-000**

80W

Applicable Model DF25A/30A

**32000-99J00-000**

80W

Applicable Model DF8A/9.9A

**32000-89L00-000**

80W

Applicable Model DF9.9B/15A/20A

## RECTIFIER SET



**32801-91J01-000** 098

Applicable Model DF4-6

**32801-95J01-000** 099

Applicable Model DF8A/9.9A

**32801-89L00-000**

Applicable Model DF9.9B/15A/20A

**32801-96304-000** 100

Applicable Model DT25K/30

**32801-94402-000** 101

Applicable Model DT40W

## RECEPTACLE KIT



**39600-91J13-000**

Applicable Model DF4-6

**39600-94J01-000** 102

Applicable Model DF8A/9.9A

**39600-89L00-000**

Applicable Model DF9.9B/15A/20A



**39600-94L00-000** 103

Applicable Model DF25A/30A



**39600-93910-000** 104

Applicable Model DT9.9A-40W

## COUNTER SELECT CONNECTOR



**36612-98J01-000** 106

Applicable Model DF200AP/250AP/300AP

Converts DF300AP/250AP to counter rotation specification.

## BATTERY ISOLATOR LEAD SET



**33830-96J00-000** 107

Applicable Model DF150TG/ZG/175TG/ZG/  
200A/AP/250AP/300AP

**33830-98J11-000**

Applicable Model DF300AP/250AP

## FLYWHEEL



**32102-96462-000** 108

Applicable Model DT30

## STARTING SWITCH & CABLE SET



**33800-96304-000** 109

Applicable Model DT30

## STARTER MOTOR SET



**31101-96320-0EP** 105

Applicable Model DT30

# ANODE

# FUEL SYSTEM

GENUINE RIGGING-PARTS AND ACCESSORIES

## ZINC ANODE for saltwater



**55300-95500-000** 110

Applicable Model DF8A/9.9A/40A-60A,  
DT25K-40W



**55320-95311-000** 111

Applicable Model DF40A-60A/150-300AP



**55125-96310-000** 112

Applicable Model DF25/R/Q



**55321-90J01-000** 113

Applicable Model DF50AV/60AV/100A-140A

## ALUMINUM ANODE for brackish water, saltwater



**55321-87J00-000** 114

Applicable Model DF2.5-300AP,  
DT9.9AK/15AK



**55320-94900-000** 115

Applicable Model DF60A-300AP



**55321-95J00-000** 116

Applicable Model DF2.5

**55321-93J00-000** 117

Applicable Model DF150-300AP

**55321-99E00-000**

Applicable Model DF70AT/TH-300

## MAGNESIUM ANODE for freshwater



**55321-87J10-000** 118

Applicable Model DF4-300AP,DT9.9A/15A



**55321-94910-000** 119

Applicable Model DF70A-300AP

## FUEL TANK

NOTE : These tanks do not meet US-EPA requirements.



**65000-99100-000** 120

12-litre plastic tank without  
fuel-level gauge

Applicable Model DF4/5/6, DT9.9AK/  
15AK/25K/40WK  
(-K:For Gasoline)

**65000-95D01-000** 121

25-litre plastic tank with  
fuel-level gauge

Applicable Model DF8A-140A,  
DT9.9AK-40W/WR/WK  
(-K:For kerosene)

**65000-89L10-000**

12-litre plastic tank

Applicable Model DF8A-20A

## REPLACEMENT FUEL CAP

NOTE : These caps do not meet US-EPA requirements.

**65520-99100-000**

for 12-litre tank without fuel-level gauge

Applicable Model DF5-20A/R,DT9.9AK/15AK/25K/40WK

**65520-95D01-000**

for 25-litre tank with fuel-level gauge

Applicable Model DF8A-140A,DT9.9AK-40W/WR/WK

## FUEL-HOSE SOCKET



**65750-98505-000** 122

Metal, Inner diameter: 11.2 mm

Applicable Model DF4-20A/R, DT9.9/K-40W/  
WR/WK



**65750-87J11-000** 123

Plastic, Inner diameter: 6.6 mm

Applicable Model DF4/8A-30A



**65750-955L0-000** 124

Metal, Inner diameter: 13.0 mm

Applicable Model DF8A/R-140A,  
DT9.9AK-40W/WR/WK

# FUEL SYSTEM

## FUEL CONNECTOR (ENGINE SIDE)



**65720-986L0-000** 125

Plastic

Applicable Model DF4

## FUEL CONNECTOR (TANK SIDE)



**65740-95D01-000** 126

Outer diameter: 13 mm, 1/4"NPT

Applicable Model DF8A/R-140A,  
DT9.9/K-40W/WR/WK

## SQUEEZE PUMP



**65770-99J01-000** 127

Small-in & Large-out

Applicable Model DF4-6, DT9.9AK/15AK/25K/40WK

**65770-90J11-000**

Large-in & Large-out

Applicable Model DF8A-140A, DT9.9AK/15AK/25K/40WK

**65770-93J11-000**

Large-in & Large-out

Applicable Model DF150-300AP

**65770-90L01-000**

Large-in & Small-out

Applicable Model DF9.9A/15A/DT30/40W

## SQUEEZE PUMP

(Meets US-EPA requirements.)

**65770-94J02-000**

Small-in & Large-out

Applicable Model DF4/6

**65770-90J01-000**

Large-in & Large-out

Applicable Model DF8A-25A/30A

**65770-93J02-000**

Large-in & Large-out

Applicable Model DF150-300AP

## FUEL-HOSE COMPONENT



**65700-94JD1-000**

for 12-litre plastic tank to engine

Applicable Model DF4-6

**65700-93J02-000** 128

for fuel tank to engine

Applicable Model DF150-300AP

**65700-87J15-000**

for 25-litre plastic tank to engine

Applicable Model DF8A-20A

**65700-90J14-000**

for 25-litre plastic tank to engine

Applicable Model DF40A-140A

**65700-95D03-000**

for 12-litre plastic tank to engine (gasoline)

Applicable Model DT9.9AK/15AK/25K/40WK

**65700-96362-000**

for 25-litre plastic tank to engine (kerosene)

Applicable Model DT9.9AK/15AK/25K/40WK

**65700-94415-000**

with fuel filter (gasoline)

Applicable Model DT9.9AK/15AK/25K/40WK

**65700-94433-000**

with fuel filter (kerosene)

Applicable Model DT9.9AK/15AK

Only for P36 ver.

## FUEL-HOSE COMPONENT

(Meets US-EPA requirements.)

**65700-91J25-000**

Applicable Model DF4/6

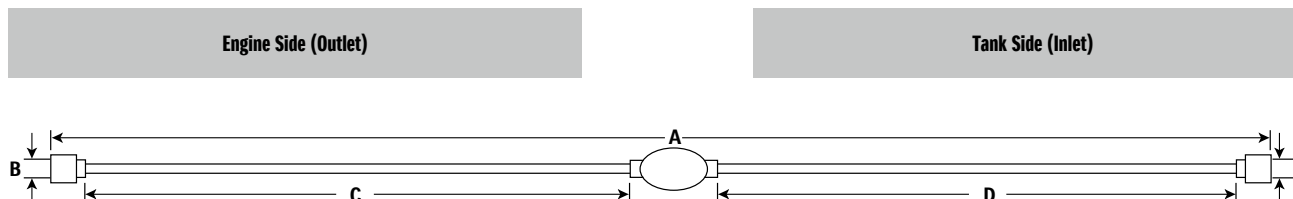
**65700-87J24-000**

Applicable Model DF8A-25

**65700-88L03-000**

Applicable Model DF40A-60A

# FUEL-HOSE COMPONENT Chart



FUEL HOSE COMPONENT		SOCKET			HOSE				SQUEEZE PUMP	HOSE				SOCKET		
Part Number	A Length (mm)	Material	B I/D (mm)	Part Number	C Length (mm)		I/D (mm)	O/D (mm)		D Length (mm)		I/D (mm)	O/D (mm)	Material	E I/D (mm)	Part Number
65700-94JD1-000	1970	Plastic	6.6	65750-87J11-000	700	Large	7.3	12.5	65770-99J01-000	1100	Small	5.3	10.5	Metal	11.2	65750-98505-000
65700-93J02-000	2370	(no socket)	-	-	(no hose)	-	-	-	65770-93J11-000	2250	Large	9.0	14.0	(no socket)	-	-
65700-87J15-000	1970	Plastic	6.6	65750-87J11-000	700		7.3	12.5	65770-90J11-000	1100		7.3	12.5	Metal	13.0	65750-95500-000
65700-90J14-000	1250	(no socket)	-	-	(no hose)	-	-	-	65770-90J11-000	1100		7.3	12.5	Metal	13.0	65750-95500-000
65700-95D03-000	2550	Metal	13.0	65750-95500-000	300		7.3	12.5	65770-99J01-000	2090		5.3	10.5	Metal	11.2	65750-98505-000
65700-96362-000	2620	Metal	11.2	65750-98505-000	300		5.3	10.5	-	2250		7.3	12.5	Metal	13.0	65750-95500-000
65700-94415-000	3100	Metal	13.0	65750-95500-000	300		7.3	12.5	65770-90J11-000	2600		7.3	12.5	-	-	-
65700-94433-000	3100	Plastic	13.8	65750-94404-000	3000		7.3	12.5	-	-		-	-	-	-	-
65700-91J25-000	2000	Plastic	6.6	65750-87J11-000	700		7.3	12.5	65770-94J02-000	1100		5.3	10.5	Metal	11.2	65750-98505-000
65700-87J24-000	2000	Plastic	6.6	65750-87J11-000	700		7.3	12.5	65770-90J01-000	1100		7.3	12.5	Metal	13.0	65750-95500-000
65700-88L03-000	1280	(no socket)	-	-	(no hose)	-	-	-	65770-90J01-000	1100		7.3	12.5	Metal	13.0	65750-95500-000

## WATER SEPARATOR / FUEL FILTER



**65900-98J00-000** 129

Including filter element

Applicable Model DF8A-300AP,DT9.9A-40W/WR/WK

## ELEMENT SET



**65910-98J00-000** 130

Replacement filter for water separator/fuel filter 65900-98J00-000

Applicable Model DF8A-300AP, DT9.9A-40W/WR/WK

# PROPELLER

## What is PROPELLER

Propeller selection is very important in the performance of your boat. Acceleration, speed, fuel efficiency, stability and engine RPM all are affected by the propeller selected. Operating requirements and conditions will also affect which design, style and pitch of propeller you may choose to meet your individual needs. The boat and engine combination may have already been tested by your dealer or the boat manufacturer for the appropriate propeller size. Your Suzuki Dealer can assist you with the process to determine the correct propeller for your application.

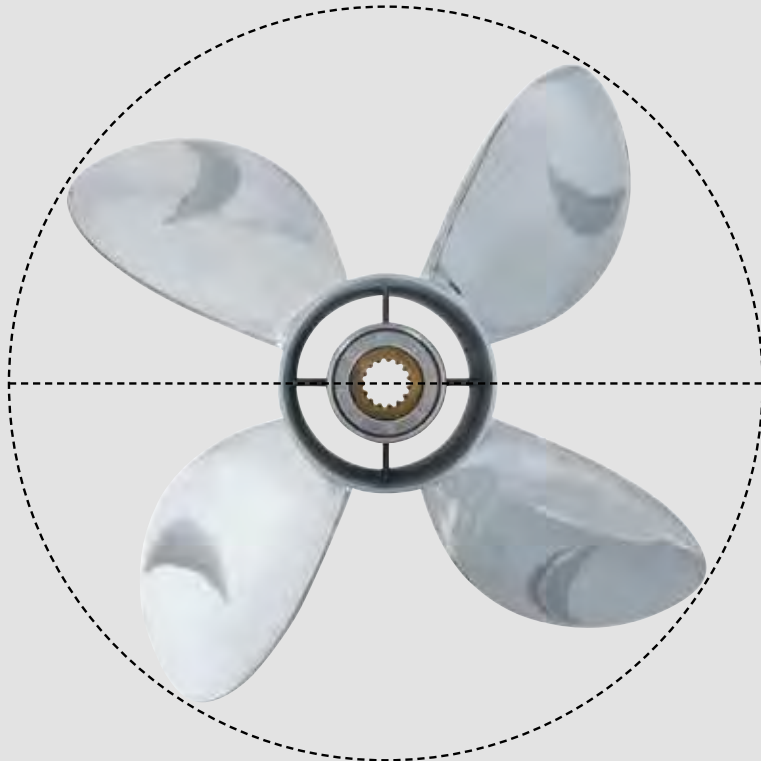
## Stainless Steel Propellers

Suzuki Stainless Steel Propellers offer higher performance and greater durability than aluminum propellers. The aggressive design of these propellers enhances the overall performance of your boat and the durability of the stainless steel construction will give you long term dependability. Your Suzuki Stainless Steel propeller is also fitted with a rubber cushion hub to help absorb vibration and shock should you strike a foreign object.

## Propeller Sizing

When referring to propeller size, such as 3 x 13 x 18, the first number is the number of blade, the second number details the diameter of the propeller and the third number is the pitch of the propeller.

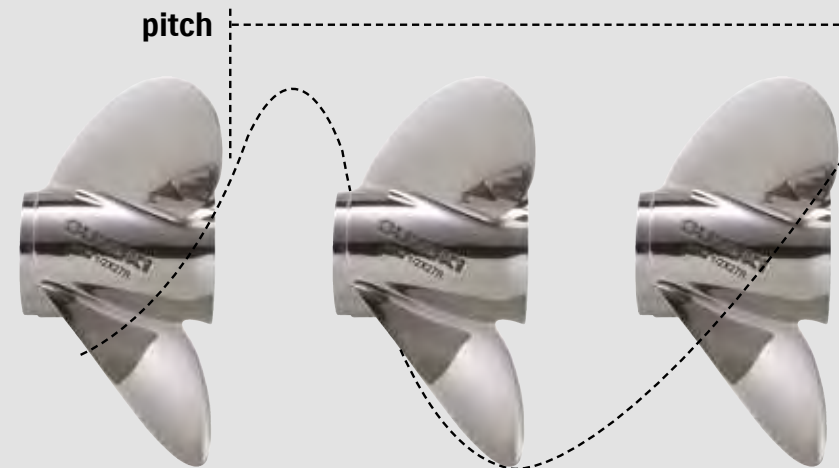
The pitch is the most significant number in the description. The diameter is usually predetermined by the propeller engineers and is based on the size and series of the engine.



## Diameter

Diameter is considered to be the distance across an imaginary circle that is made when a propeller is rotated. Diameter is determined during the engineering process of designing a propeller and is usually based on requirements to meet the needs of engine size, gear case design, horsepower and speed.

diameter





## Pitch

Pitch is used to describe the theoretical distance that a propeller “cork screws” through the water in inches of forward travel. In theory, an 18” pitch propeller would move ahead 18” with each complete revolution of a propeller. There is always some percentage of inefficiency as water conditions, boat weight and propeller style are introduced into the performance equation. The lower the “slip factor,” the more efficiently the propeller will perform and the faster the speed at a given engine RPM. Lower pitches accelerate faster, but have a lower top end speed. Higher pitches have a slower acceleration, but may attain higher top speeds. An inch of pitch generally is equal to 150-200 engine RPM at wide open throttle (WOT). If pitch is increased by an inch, RPM will decrease by 150-200 RPM at WOT. If pitch is decreased by an inch, RPM will increase by 150-200 RPM at WOT. Always operate your boat/engine combination within the recommended RPM range guidelines as stated in your operator’s manual. Operating outside the recommended range can cause severe damage to your engine and may void the engine warranty.



## Propeller Cup

Cup is used to reduce the slip and ventilation of the propeller. This will allow you to operate your engine at a higher transom mounting and allow you to use more trim for bow lift. The cup refers to the area along the trailing edge of the propeller blade that has an increased pitch in the last 1/2” of the blade surface and extends to the blade tip.

## Rake

Rake is described as the angle, in degrees, that the propeller blades are mounted to the “barrel” of the propeller. The blades of a zero degree rake propeller are mounted perpendicular to the “barrel” of the propeller. The blades of a higher rake propeller angle more to the rear of the propeller. A propeller with a high rake design will hold the water on the blades longer during operation and will ventilate less at higher engine heights. High rake propellers will produce higher thrust that will help lift the bow of the boat more effectively.

## HARDWARE FOR PROPELLER

Applicable Model	STOPPER		PROPELLER BUSH		HARDWARE KIT	Contents of HARDWARE KIT			
		SPACER				SPACER	WASHER	NUT	COTTER PIN
DF2.5	57635-91JL0-000	-	58120-97JA0-000	Press-In	N/A	-	-	58130-91JL0-000	09204-03003-000
DF4/5/6	57635-91JL0-000	-	58120-91JL0-000	Press-In	N/A	-	-	58130-91JL0-000	09204-03003-000
DF8A/9.9A	57632-94J00-000	-	58120-93701-000	Press-In	N/A	-	09160-12066-000	09141-12005-000	09204-02004-000
DF9.9B/15A/20A, DT9.9A/15A	57632-94J00-000	-	58120-89L00-000	Press-In	N/A	-	09160-12066-000	09141-12005-000	09204-02004-000
DF25	57632-95J00-000	-	58120-96401-000	Press-In	57630-96300-000	57633-96300-000	09160-14028-000	09141-14008-000	09204-03003-000
DT25/30	57632-91L00-000	-	58120-96401-000	Press-In	57630-96300-000	57633-96300-000	09160-14028-000	09141-14008-000	09204-03003-000
DT40	57632-92L00-000	-	58120-88L01-000	Press-In	57630-94300-000	57633-94300-000	09160-18028-000	09141-18005-000	09204-03003-000
DF40A/50A/60A	57632-95320-000	-	58120-88L01-000	Press-In	57630-94300-000	57633-94300-000	09160-18028-000	09141-18005-000	09204-03003-000
DF50AV/60AV	57635-90J01-000	-	*58105-90J00-000	Press-In	57630-94500-000	57633-90J02-000	09160-18028-000	09141-18005-000	09204-03003-000
DF70A/80A/90A	57632-87L01-000	-			57630-90J00-000	57633-90J02-000	09160-18028-000	09141-18005-000	09204-03003-000
DF100A/115A T model (Right-Hand-Rotation)	57635-90J01-000	57632-90J00-000	*58105-90J00-000	Press-In	57630-90J00-000	57633-90J02-000	09160-18028-000	09141-18005-000	09204-03003-000
DF115A Z model (Counter-Rotation)	57635-92J01-000	-	**58120-90J00-000		57630-90J00-000	57633-90J02-000	09160-18028-000	09141-18005-000	09204-03003-000
DF140A	57635-92J01-000	-			57630-90J00-000	57633-90J02-000	09160-18028-000	09141-18005-000	09204-03003-000
					57630-90J00-000	57633-90J02-000	09160-18028-000	09141-18005-000	09204-03003-000
DF150-300AP	57632-93L01-000	-	***58105-93J00-000 ****58105-93J10-000	Press-In	57630-92E00-000	57633-87D30-000	09160-18028-000	09141-18005-000	09204-03003-000

\*58105-90J00 is for **58100-87Lxx, 58100-90Jxx, 58200-92J4x-92J9x and 58200-92JAx-92JDx**. \*\*58120-90J00 is for **58200-90J0x-90J3x and 58200-92J0x-92J3x**. \*\*\*58105-93J00 is for **58200-96Jxx**.

\*\*\*\*58105-93J10 is for **58200-93Jxx, 58200-93Lxx and 58300-93Jxx**.

These bold letters indicate a proper part number in P34 & 35. Please refer to next pages.

# PROPELLER

\*RR:Right-Hand-Rotation model, CR:Counter-Rotation model

model	type	material	blabe	diamater	pitch	rotation*	description	part number
<b>DF2.5</b>	A520	Aluminum	3	7 3/8	5 3/8	RR		58110-97JA0-019
<b>DF4</b>	C601	Aluminum	3	7 1/2	6	RR		58110-91JL0-019
<b>DF5</b>	C611	Aluminum	3	7 1/2	6 1/2	RR		58110-91JM0-019
<b>DF6</b>	C701	Aluminum	3	7 1/2	7	RR		58110-91JN0-019
<b>DF8A</b>	M701	Aluminum	3	9 1/4	7	RR		58100-89L00-019
<b>DF9.9A</b>	M821	Aluminum	3	9 1/4	8	RR	THICK	58100-90L40-019
	M901	Aluminum	3	9 1/4	9	RR		58100-89L20-019
	M911	Aluminum	3	9 1/4	9	RR	THICK	58100-90L50-019
	M1001	Aluminum	3	9 1/4	10	RR		58100-89L30-019
	M1011	Aluminum	3	9 1/4	10	RR	THICK	58100-90L21-019
	M1101	Aluminum	3	9 1/4	11	RR		58100-89L40-019
<b>DF9.9B</b>		Aluminum	4	10	5	RR	High thrust	58100-94JA1-019
<b>DF15A</b>		Aluminum	3	9 1/4	7	RR		58100-89L00-019
<b>DF20A</b>		Aluminum	3	9 1/4	8	RR	THICK	58100-90L40-019
		Aluminum	3	9 1/4	9	RR		58100-89L20-019
<b>DT9.9A</b>		Aluminum	3	9 1/4	9	RR	THICK	58100-90L50-019
<b>DT15A</b>		Aluminum	3	9 1/4	10	RR		58100-89L30-019
		Aluminum	3	9 1/4	10	RR	THICK	58100-90L60-019
		Aluminum	3	9 1/4	11	RR		58100-89L40-019
		Aluminum	3	9 1/4	12	RR		58100-89L50-019
<b>DF25</b>	P911	Aluminum	3	10 1/4	9	RR	THICK	58100-96371-019
<b>DT25</b>	P1001	Aluminum	3	10 1/4	10	RR		58100-96411-019
<b>DT30</b>	P1011	Aluminum	3	10 1/4	10	RR	THICK	58100-96471-019
<b>DF25A</b>	P1101	Aluminum	3	10 1/4	11	RR		58100-96421-019
<b>DF30A</b>	P1201	Aluminum	3	10 1/4	12	RR		58100-91L00-019
	P1211	Aluminum	3	10 1/4	12	RR	THICK	58100-96481-019
	P1301	Aluminum	3	10 1/4	13	RR		58100-91L10-019
	P1311	Aluminum	3	10 1/4	13	RR	THICK	58100-96491-019
	P1401	Aluminum	3	10 1/4	14	RR		58100-95D01-019
	P1501	Aluminum	3	10 1/4	15	RR		58100-96461-019

model	type	material	blabe	diamater	pitch	rotation*	description	part number
<b>DF40A</b>	S900	Aluminum	3	11 1/2	9	RR		58100-88L03-019
<b>DF50A</b>	S1000	Aluminum	3	11 1/2	10	RR		58100-88L13-019
<b>DF60A</b>	S1100	Aluminum	3	11 1/2	11	RR		58100-88L23-019
<b>DT40</b>	S1200	Aluminum	3	11 5/8	12	RR		58100-88LA0-019
	S1301	Aluminum	3	11 1/2	13	RR		58100-88LB0-019
	S1400	Aluminum	3	11 3/8	14	RR		58100-88L52-019
	S1500	Aluminum	3	11 1/4	15	RR		58100-88L62-019
	S1600	Aluminum	3	11 1/8	16	RR		58100-88L72-019
	S1700	Aluminum	3	11	17	RR		58100-88L83-019
	SS1600	Stainless	3	11 1/8	16	RR		58200-88L30-000
	<b>DF50AV</b>		Aluminum	3	14	9	RR	
<b>DF60AV</b>		Aluminum	3	14	11	RR		58100-87LH0-019
		Aluminum	3	13 3/4	12	RR		58100-87LJ0-019
		Aluminum	3	14	13	RR		58100-87LA0-019
		Aluminum	3	13 7/8	15	RR		58100-87LB0-019
		Aluminum	3	13 3/4	17	RR		58100-87LC0-019
<b>DF70A</b>		Aluminum	3	14	13	RR		58100-87LA0-019
<b>DF80A</b>		Aluminum	3	13 7/8	15	RR		58100-87LB0-019
		Aluminum	3	13 3/4	17	RR		58100-87LC0-019
		Aluminum	3	13 3/4	19	RR		58100-87LD0-019
<b>DF90A</b>		Aluminum	3	13 3/4	21	RR		58100-87LE0-019
		Aluminum	3	13 3/4	23	RR		58100-87LF0-019
		Aluminum	3	13 1/2	15	RR		58100-90JE0-019
		Aluminum	3	14	17	RR		58100-90JA0-019
		Aluminum	3	14	19	RR		58100-90JB0-019
		Aluminum	3	14	21	RR		58100-90JC0-019
		Aluminum	3	14	23	RR		58100-90JD0-019
		Stainless	3	14 1/4	18	RR		99105-00700-18P
		Stainless	3	14 1/4	20	RR		99105-00700-20P
		Stainless	3	14 1/4	22	RR		99105-00700-22P
		Stainless	3	14 1/4	24	RR		99105-00700-24P
		Stainless	3	13 7/8	15	RR		58200-92J40-000
		Stainless	3	13 7/8	17	RR		58200-92J50-000
		Stainless	3	13 7/8	19	RR		58200-92J60-000
		Stainless	3	13 7/8	21	RR		58200-92J70-000
	Stainless	3	13 7/8	23	RR		58200-92J80-000	
	Stainless	3	13 7/8	25	RR		58200-92J90-000	

model	type	material	blabe	diamater	pitch	rotation*	description	part number
<b>DF100A</b>		Aluminum	3	13 1/2	15	RR		58100-90JE0-019
<b>DF115A</b>		Aluminum	3	14	17	RR		58100-90JA0-019
<b>DF140A</b>		Aluminum	3	14	19	RR		58100-90JB0-019
		Aluminum	3	14	21	RR		58100-90JC0-019
		Aluminum	3	14	23	RR		58100-90JD0-019
		Stainless	3	14 1/4	18	RR		99105-00700-18P
		Stainless	3	14 1/4	20	RR		99105-00700-20P
		Stainless	3	14 1/4	22	RR		99105-00700-22P
		Stainless	3	14 1/4	24	RR		99105-00700-24P
		Stainless	3	14 1/4	18	CR		99105-0070L-18P
		Stainless	3	14 1/4	20	CR		99105-0070L-20P
		Stainless	3	14 1/4	22	CR		99105-0070L-22P
		Stainless	3	14 1/4	24	CR		99105-0070L-24P
		Stainless	3	13 7/8	15	RR		58200-92J40-000
		Stainless	3	13 7/8	17	RR		58200-92J50-000
		Stainless	3	13 7/8	19	RR		58200-92J60-000
		Stainless	3	13 7/8	21	RR		58200-92J70-000
		Stainless	3	13 7/8	23	RR		58200-92J80-000
		Stainless	3	13 7/8	25	RR		58200-92J90-000
		Stainless	3	13 7/8	17	CR		58200-92JA0-000
		Stainless	3	13 7/8	19	CR		58200-92JB0-000
		Stainless	3	13 7/8	21	CR		58200-92JC0-000
		Stainless	3	13 7/8	23	CR		58200-92JD0-000

model	type	material	blabe	diamater	pitch	rotation*	description	part number
<b>DF150</b>		Stainless	3	16	15	RR		58200-93L80-000
<b>DF175</b>		Stainless	3	16	17	RR		58200-93L00-000
<b>DF200</b>		Stainless	3	16	18 1/2	RR		58200-93L10-000
<b>DF225</b>		Stainless	3	16	20	RR		58200-93L20-000
<b>DF250</b>		Stainless	3	16	21 1/2	RR		58200-93L30-000
<b>DF250AP</b>		Stainless	3	16	23	RR		58200-93L40-000
<b>DF300AP</b>		Stainless	3	16	24 1/2	RR		58200-93L50-000
		Stainless	3	16	26	RR		58200-93L60-000
		Stainless	3	16	27 1/2	RR		58200-93L70-000
		Stainless	3	16	17	CR		58200-93LE0-000
		Stainless	3	16	18 1/2	CR		58200-93LA0-000
		Stainless	3	16	20	CR		58200-93LB0-000
		Stainless	3	16	21 1/2	CR		58200-93LC0-000
		Stainless	3	16	23	CR		58200-93LD0-000
		Stainless	3	16	24 1/2	CR		58200-93LF0-000
		Stainless	3	16	26	CR		58200-93LG0-000
		Stainless	3	15 1/2	17	RR		58200-96J00-000
		Stainless	3	15 1/4	19	RR		58200-96J10-000
		Stainless	3	15	21	RR		58200-96J20-000
		Stainless	3	14 3/4	23	RR		58200-96J30-000
		Stainless	3	14 1/2	25	RR		58200-96J40-000
		Stainless	3	14 1/2	27	RR		58200-96J50-000
		Stainless	3	15 1/2	17	CR		58200-96JA0-000
		Stainless	3	15 1/4	19	CR		58200-96JB0-000
		Stainless	3	15	21	CR		58200-96JC0-000
		Stainless	3	14 3/4	23	CR		58200-96JD0-000
		Stainless	3	14 1/2	25	CR		58200-96JE0-000
		Stainless	3	14 1/2	27	CR		58200-96JF0-000
		Stainless	4	15 1/4	18	RR		58300-93J00-000
		Stainless	4	15 1/4	20	RR		58300-93J10-000
		Stainless	4	15 1/4	22	RR		58300-93J20-000
		Stainless	4	15 1/4	24	RR		58300-93J30-000
		Stainless	4	15 1/4	26	RR		58300-93J40-000
		Stainless	4	15 1/4	20	CR		58300-93JA0-000
		Stainless	4	15 1/4	22	CR		58300-93JB0-000
		Stainless	4	15 1/4	24	CR		58300-93JC0-000
		Stainless	4	15 1/4	26	CR		58300-93JD0-000

# CARE & MAINTENANCE ITEM

## ENGINE COVER



**68110-89L00-000** 131

Applicable Model DF8A-20A, DT9.9A-15A

**68110-88L00-000** 132

Applicable Model DF25/40A-60A, DT25/30

**68110-87L00-000** 133

Applicable Model DF70A-140A, DT40

**68110-96J00-000** 134

Applicable Model DF150T/Z-250T/Z

**68110-98J00-000** 135

Applicable Model DF250AP/300AP



**990F0-88L00-010** 136

Applicable Model DF40A/DF50A/DF60A with new 4stroke logo



**990F0-87J00-010**

Applicable Model DF40/50

**990F0-99E00-010** 137

Applicable Model DF60/70

**990F0-87L00-010**

Applicable Model DF70A/80A/90A

**990F0-90J00-010**

Applicable Model DF90/115

**990F0-92J00-010**

Applicable Model DF140

**990F0-96J00-010**

Applicable Model DF150/175

**990F0-93J00-010**

Applicable Model DF200/225/250

**990F0-98J00-010**

Applicable Model DF300

## PAINT

**99000-10202-0EP**

Touch-up paint set black  
12ml

**997SO-41004-CLR** 138

AE clear coat  
400ml

**997SO-41004-0EP** 139

AE shadow black metallic  
400ml

**997SO-41004-0ED** 140

AE california gray metallic  
400ml



138

139

140

## GREASE



**99000-25011-000** 141

SUPER GREASE-A  
450 grams (15.8 oz) for Crank oil seal



**99000-25350-000** 142

WATER RESISTANT GREASE EP2  
250 grams (8.8 oz)



**99000-79N12-M07** 143

SAE 90, API GL-5  
Packaging unit 24 x 0.35 litre

## LIQUID GASKET



**99000-31140-THR** 144

1207B (BLACK)  
100 grams (3.4 oz)

## FLUSH-HOSE ATTACHMENT



**55181-95200-000** 145

Applicable Model DF4-6/40A-60A,  
DT25K/30/40W



**17917-87L00-000** 146

Applicable Model DF8A-300A

## THREAD LOCK



**99000-32130-000** 147

1360 (RED)  
50 grams (1.7 oz)

**99000-32110-THR** 148

1342 (BLUE)  
50 grams (1.7 oz)

**THREAD LOCK**



**99000-79N12-M08** 149  
 "S" MARINE GEAR OIL SAE90  
 Packaging unit 12 x 1 litre

**SUZUKI APPROVED GENUINE OIL by MOTUL**

These products are supplied directly by MOTUL. Please note that these oils are not available in some countries. Please contact with local distributor of MOTUL.

Suzuki and MOTUL have been in partnership in MotoGP since 1988. Extending this trusted relationship led to the development of new Suzuki Marine Oils. These ranges of oils have excellent oxidation stability and provide outstanding rust protection under severe operating conditions.

API Classification	SAE Viscosity Grade
SG	
SH	10W-40
SL	
SJ	10W-30
SM	
TEMP.	C: -20 -10 0 10 20 30 40 F: -4 14 32 50 68 86 104



**99000-79N12-M01** 152  
 SAE 10W-30 semi synthetic  
 4 x 5 litre FCW



**99000-79N12-M04** 153  
 SAE 10W-40 semi synthetic  
 4 x 5 litre FCW

**ALARM SYSTEM, COMPACT VERSION**



**990F0-ALARM-002** 154  
 Applicable Models DF40 - DF140 from 2005-  
 FD250 from 2004-2012  
 DF200 from 2004-  
 DF150-DF175 from 2006-  
 Easy to mount, Suzuki outboard engine dedicated plug & play connection. The various features of this waterproof remote controlled alarm system include e.g. system disarming by pin code, remote control, optical and acoustical signalization, engine stop function, cable cutting protection, and many more. Includes 1 micro magnetic contact.

**HYDRAULIC FLUID**



**990F0-22541-001** 150  
 Dexron III for all Suzuki 2 and 4 stroke outboard powertrim/tilt systems  
 1 litre

**INHIBITOR**



**997S0-KONS3-001** 151  
 Multi-purpose fluid lubricant: unblocks, lubricates and protects from corrosion all metal parts by depositing a protective film.  
 400 ml

**990F0-79N12-M00**  
 SAE 10W-30 semi synthetic  
 12 x 1 litre FCW

**99000-79N12-M02**  
 SAE 10W-30 semi synthetic  
 60 litre FCW

**99000-79N12-M09**  
 SAE 10W-30 semi synthetic  
 208 litre FCW

**990F0-79N12-M03**  
 SAE 10W-40 semi synthetic  
 12 x 1 litre FCW

**99000-79N12-M05**  
 SAE 10W-40 semi synthetic  
 60 litre FCW

**99000-79N12-M10**  
 SAE 10W-40 semi synthetic  
 208 litre FCW

**MICRO MAGNETIC CONTACT FOR ALARM SYSTEM**

**990F0-ALARM-004**  
 Additional waterproof micro magnetic contact for alarm system 990F0-ALARM-002. To be used e.g. for dashboard driving console and access point protection (sliding doors, windows).

**BATTERY CHARGER**



**990E0-OPTIM-CAR** 155  
 OptiMate 6, versatile battery charger, maintainer and tester. Recommended for STS/AGM/MF/GEL and spiral cell batteries from 15 Ah to 240 Ah.

# APPLICATION CHART

ITEM	Page	DF300AP	DF250AP	DF250		DF225		DF200		DF200AP	DF200A	DF175A				DF150				DF140A		DF115A			DF100A	DF90A	DF80A	DF70A		DF60A									
		DF300AP	DF250AP	DF250ST	DF250T	DF250Z	DF225T	DF225Z	DF200T	DF200Z	DF200AP	DF200AT	DF200AZ	DF175TG	DF175ZG	DF175T	DF175Z	DF150AS	DF150TG	DF150ZG	DF150T	DF150Z	DF140AT	DF140AZ	DF115AS	DF115AT	DF115AZ	DF100AT	DF90AT	DF90ATH	DF80AT	DF70AT	DF70ATH	DF60AT	DF60ATH	DF60AQH			
<b>NEW MULTI FUNCTION GAUGE</b>	P.06	○	○	○	○	○	○	○	○	○	○	○	○	○	○	○	○	○	○	○	○	○	○	○	○	○	○	○	○	○	○	○	○	○	○	○	○	○	○
<b>KEYLESS START SYSTEM</b>	P.07									○																													
<b>SUZUKI MODULAR INSTRUMENT SYSTEM</b>	P.08-13	○	○	○	○	○	○	○	○	○	○	○	○	○	○	○	○	○	○	○	○	○	○	○	○	○	○	○	○	○	○	○	○	○	○	○	○	○	○
<b>ANALOG INSTRUMENT</b>	P.14-15			○	○	○	○	○	○																														
<b>ELECTRONIC THROTTLE AND SHIFT SYSTEM</b>	P.16-19																																						
ELECTRONIC REMOTE CONTROL KIT	P.16-17	○	○							○			○	○				○	○																				
ELECTRONIC REMOTE CONTROL BOX	P.16	○	○							○			○	○				○	○																				
BATTERY LEAD	P.19	○	○							○			○	○				○	○																				
<b>MECHANICAL REMOTE CONTROL SYSTEM</b>	P.20-23																																						
MECHANICAL REMOTE CONTROL KIT	P.20			○	○	○	○	○	○		○	○				○				○	○	○	○	○	○	○	○	○	○	○	○	○	○	○	○	○	○	○	○
MECHANICAL REMOTE CONTROL BOX	P.21			○	○	○	○	○	○		○	○				○				○	○	○	○	○	○	○	○	○	○	○	○	○	○	○	○	○	○	○	○
BATTERY LEAD	P.21			○	○	○	○	○	○		○	○				○				○	○	○	○	○	○	○	○	○	○	○	○	○	○	○	○	○	○	○	○
REMOTE-CONTROL CABLE	P.23			○	○	○	○	○	○		○	○				○				○	○	○	○	○	○	○	○	○	○	○	○	○	○	○	○	○	○	○	○
REMOTE-CONTROL ATTACHING KIT	P.23			○	○	○	○	○	○		○	○				○				○	○	○	○	○	○	○	○	○	○	○	○	○	○	○	○	○	○	○	○
<b>STEERING</b>	P.24-25																																						
TILLER HANDLE KIT	P.24																									○		○											
DUAL-ENGINE TIE-BAR	P.25			○	○	○	○	○	○	○	○	○	○	○	○	○	○	○	○	○	○	○	○	○	○	○	○	○	○	○	○	○	○	○	○	○	○	○	○
STEERING EXTENSION KIT	P.25			○	○	○	○	○	○	○	○	○	○	○	○	○	○	○	○	○	○	○	○	○	○	○	○	○	○	○	○	○	○	○	○	○	○	○	○
STEERING -BRACKET ATTACHMENT	P.25																												○										
DLUG-LINK KIT	P.25			○	○	○	○	○	○	○	○	○	○	○	○	○	○	○	○	○	○	○	○	○	○	○	○	○	○	○	○	○	○	○	○	○	○	○	○
<b>ELECTRICAL PARTS</b>	P.28																																						
COUNTER SELECT CONNECTOR	P.28	○	○							○																													
BATTERY ISOLATOR LEAD SET	P.28	○	○							○	○	○	○	○	○	○	○	○	○	○	○	○	○	○	○	○	○	○	○	○	○	○	○	○	○	○	○	○	○
ELECTRIC STARTER KIT (ONLY FOR MZ type)	P.28																																						
BATTERY CHARGING KIT (ONLY FOR MZ type)	P.28																																						
RECTIFIER SET (ONLY FOR MZ type)	P.28																																						
RECEPTACLE KIT (ONLY FOR MZ type)	P.28																																						
<b>ANODE</b>	P.29	○	○	○	○	○	○	○	○	○	○	○	○	○	○	○	○	○	○	○	○	○	○	○	○	○	○	○	○	○	○	○	○	○	○	○	○	○	○
<b>FUEL SYSTEM</b>	P.29-31	○	○	○	○	○	○	○	○	○	○	○	○	○	○	○	○	○	○	○	○	○	○	○	○	○	○	○	○	○	○	○	○	○	○	○	○	○	○



# CLOTHING AND MERCHANDISE

## TEAM BLUE



**990F0-BLBE2-000** 001

### TEAM BEANIE BLUE

Blue team beanie with soft fleece lining, outer material 100% acrylic, inner fleece lining 100% polyester.

ONE SIZE FITS ALL



**990F0-BLMJ2-size** 002

### TEAM JACKET BLUE WATERPROOF

Blue waterproof and breathable membrane jacket, embroidered Suzuki logos front and rear, ventilation-zips, detachable hood, zip pockets, outer material soft-shell 96% polyester, 4% elastane, lining: mesh 100% polyester.

Size S/M/L/XL/XXL/3XL



**990F0-BLRJ2-size** 003

### TEAM RAIN JACKET BLUE WATERPROOF (RAINBREAKER)

Blue lightweight waterproof rain jacket, small packaging, including pouch with straps integrated in reversible outer pocket, printed Suzuki Logos front and rear, 100% polyamide.

Size S/M/L/XL/XXL/3XL



**990F0-BLQJ2-size** 004

### TEAM QUILTED JACKET BLUE

Functional quilted jacket, warm, lightweight and small packaging, printed Suzuki logos front and rear, zipped pockets, outer material 100% polyamide, inner lining 100% polyamide, padding 100% polyester.

Size XS/S/M/L/XL/XXL/3XL



**990F0-BLHD2-size** 005

### TEAM HOODIE BLUE

Blue full-zip team hoodie with embroidered Suzuki logos on front and rear, drawstring hood, 2 outer pockets, 80% cotton, 20% polyester.

Size S/M/L/XL/XXL/3XL

## TEAM BLACK



**990F0-BKBE2-000** 006

### TEAM BEANIE BLACK

Black team beanie with soft fleece lining, outer material 100% acrylic, inner fleece lining 100% polyester.

ONE SIZE FITS ALL



**990F0-BKMJ2-size** 007

### TEAM JACKET BLACK WATERPROOF

Black waterproof and breathable membrane jacket with red details, embroidered Suzuki logos front and rear, ventilation-zips, detachable hood, zip pockets, outer material 100% polyamide, 5% elastane, lining: mesh 100% polyester.

Size S/M/L/XL/XXL/3XL



**990F0-BKRJ2-size** 008

### TEAM RAIN JACKET BLACK WATERPROOF (RAINBREAKER)

Black lightweight waterproof rain jacket, small packaging, including pouch with straps integrated in reversible outer pocket, printed Suzuki Logos front and rear, 100% polyamide.

Size S/M/L/XL/XXL/3XL



**990F0-BKBW2-size** 009

### TEAM QUILTED BODYWARMER BLACK

Black bodywarmer with red details, printed Suzuki logos on front and rear, very lightweight and warm, small packaging volume, outer material 100% polyamide, inner lining 100% polyamide, padding 100% polyester.

Size XS/S/M/L/XL/XXL/3XL



**990F0-BKSS2-size** 010

### TEAM SOFTSHELL JACKET BLACK

Black softshell jacket with red details, full-zip, 3 outer pockets, mesh lining, 96% polyester, 4% elastane.

Size XS/S/M/L/XL/XXL/3XL





## MERCHANDISE



**990F0-MBAC1-000** 011

### BACKPACK

Day pack, functional addition to touring luggage, multiple functional pockets, bottle holder, waist and chest belts, compatible for drinking systems, eyelet fitted pocket for mp3 player and phone, 600D polyester.

Size H48cm/W25cm/D15cm/C24 litres



**990F0-DRYBP-000** 013

### SUZUKI DRY BACKPACK

Waterproof backpack, anthracite/black, integrated padded laptop sleeve (up to 17" devices), additional outer pocket, environment-friendly TPU fabric, reflective material.

Size H66cm/W35cm/D14cm/C20 litres



**990F0-MMES1-000** 015

### LAPTOP BAG BY OGIO

Keeps your laptop safe with a plush lined notebook compartment. This Laptop bag has multiple pockets for extra storage. Comfortable strap and lightweight, to carry easily, nylon with water-resistant coating.

Size H29cm/W38cm/D5cm



**990F0-MTRL1-000** 012

### SUZUKI TROLLEY BY OGIO

Durable and easy to handle, with wide mouth for easy access, adjustable dividers and padded helmet chamber, multi-use compartments, 600D polyester. 30-years manufacturer's warranty.

Size H86cm/W42cm/D39cm/C180 litres



**990F0-DRYDB-001** 014

### SUZUKI DRY BAG

Dry bag made of welded tarpaulin, reflective details, additional shoulder belt included.

Size H30cm/W30cm/D55cm/C35 litres



**990F0-MLAN1-000** 016

### LANYARD

Black fabric strap detailed with Suzuki logo and metal key ring.

# CLOTHING AND MERCHANDISE

## MERCHANDISE



**990F0-MWAL1-000** 017

### WALLET

Black full-zip wallet with embroidered Suzuki logo on front. Nylon fabric with lining. Hook for key fixation and coin zipper pocket inside.

Size H15cm/W10.5cm/D2cm



**990F0-MUMB1-000** 020

### UMBRELLA

Black with white Suzuki logo details, windproof with ergonomic EVA soft handle, comes in bag with shoulder strap, nylon with fiberglass spokes and metal shaft.

Size Diameter 130cm



**990F0-MSUN1-000** 022

### SUNGLASSES

Stylish and lightweight, with 100% UVA and B protection, made from acrylic with embossed Suzuki logo. Comes with EVA case and microfiber pouch.



**990F0-MKEY1-000** 023

### SUZUKI KEYRING BLACK

Black and white, PVC.



**990F0-SMFK1-000** 024

### MARINE FLOATABLE KEY RING

Signal yellow floatable key ring, neoprene outer material, useful for max. 3 standard keys (max. 40 gr. total).



**990F0-DRYHB-001** 018

### SUZUKI DRY HIPBAG

Waterproof hipbag made of welded tarpaulin, reflective details, adjustable waist belt.

Size C2.5 litres



**990F0-MMUG1-000** 019

### SUZUKI MUG

Black and white design red Suzuki logo. Ceramic, suitable for microwave and dishwasher.



**990F0-MWAT2-000** 021

### WATCH

Black stainless steel case. Date and time function, silicon strap, clock-face with carbon insets, mineral crystal watch glass, diameter 44mm, 5ATM water resistant. Comes with black gift box.

## FASHION AND HERITAGE



**990F0-FTS14-size** 025

### ENGINEERED4LIFE T-SHIRT GREY MELANGE

Grey melange version of the Engineered4Life triple - sewed in details and coloured print, 65% cotton, 35% polyester.

Size S/M/L/XL/XXL



**990F0-FSL01-size** 026

### HAMAMATSU LADY SWEATER

Fashion sweater with red lining applications, white strings, red and white print, 80% cotton, 20% polyester.

Size XS/S/M/L/XL



**990F0-FTS11-size** 027

### SPIRITED T-SHIRT BLACK

Black with green version of the Spirited triple, coloured print, 100% cotton.

Size S/M/L/XL/XXL

## WORK



**999LP-05401-size** 028

### WORKCOAT SHORT

Dark blue with white stripes and red piping. Turn down collar, velcro fastenings throughout and multifunctional pockets on chest and sleeves, with Suzuki detailing, 60% cotton, 40% polyester.

Size 044-106



**999LP-05405-size** 030

### WORKCOAT

Dark blue with white stripes and red piping. High collar, velcro fastenings throughout and multifunctional pockets on chest and sleeves, with Suzuki detailing, 60% cotton, 40% polyester.

Size 044-062



**990FO-BLA12-size** 032

### WORKSHOP T-SHIRT

Black, short sleeves and Suzuki logo, 65% polyester, 35% cotton.

Size S/M/L/XL/XXL



**990FO-05407-size** 034

### WORKSHOP POLO SHIRT

Black lightweight wallet with embroidered Suzuki logo on front. Cordura fabric with nylon lining. Hook for key fixation and coin zipper pocket inside.

Size S/M/L/XL/XXL



**990FO-05406-size** 036

### WORKSHOP POLO SHIRT

Dark blue, short sleeves and Suzuki logo, 100% cotton.

Size S/M/L/XL/XXL



**999LP-05404-size** 029

### OVERALL

Dark blue with white stripes and red piping. High collar, knee patches and an adjustable elastic waistband for comfort. velcro fastenings throughout and multifunctional pockets on chest, sleeves and legs, with Suzuki detailing, 60% cotton, 40% polyester.

Size 044-106



**999LP-05400-size** 031

### PIT DUNGAREES

Blue with red piping. Velcro fastenings throughout with multifunctional pockets. Stretch straps, knee patches, fly with zip fastener, adjustable elasticated waistband and woven Suzuki logo, 60% cotton, 40% polyester.

Size 044-106



**999LP-05402-size** 033

### WORKSHOP TROUSERS

Dark blue with an elasticated back, knee patches, velcro fastenings throughout, multifunctional pockets on legs and woven Suzuki logo, 60% cotton, 40% polyester.

Size 044-106



**990FO-GLOVE-size** 035

### WORKSHOP GLOVES PHYNOMIC WET

Robust and precise safety glove for general maintenance works, good dry and wet grip, water-repellent coating and liner, EN388 (4131) certification, made by UVEX SAFETY, 90% polyamide, 10% elastane.

Size 8(-008)/9(-009)/10(-010)



**990FO-GLOV1-size** 037

### WORKSHOP GLOVES PHYNOMIC XS

Light safety glove for precision works, very breathable, excellent dexterity, aqua-polymer impregnation, EN 388 (3121) certification, made by UVEX SAFETY, 90% polyamide, 10% elastane.

Size 7(-007)/8(-008)/9(-009)/10(-010)



Way of Life!



## AWARDS

Our outboards have received numerous awards for innovation.

This success recognises our vast experience in developing technology (for motorcycles, ATVs and automobiles, as well as outboards) and precise understanding of our customers' needs.

## Real Suzuki is built by Genuine Suzuki Accessories and Parts

Every Suzuki Product is built with Suzuki Genuine Accessories and Parts. They have the optimal design and specification tailored for the specific product and model. Every part has passed Suzuki's rigorous test standards for performance, quality, durability, safety and comfort. We recommend that you choose Suzuki Genuine Accessories and Parts when you need to repair your Suzuki or replace consumable parts such as filters, belt, etc.

Each genuine Accessories and Parts is the perfect match for your Suzuki Product!



## GET YOUR "SUZUKI COLLECTION" CATALOGUE NOW!

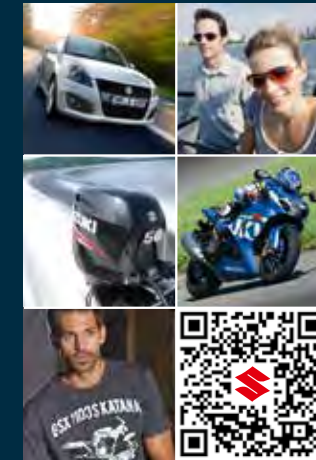
You want the perfect outfit for yourself and unique Suzuki merchandise? More you can find in the current Suzuki collection catalogue you can get from your Suzuki partner. Suzuki International Europe GMBH reserves the right to change, without notice, specifications, colours, materials and other items of clothing and merchandise products. Individual accessory items may be discontinued without notice. Product may vary from image shown. Please check with your local Suzuki Dealer for any such changes. Please confirm the full specification of your chosen accessory prior to purchase and fitment. Actual colours may differ slightly from the colours in this brochure. All details are correct at time of going to press.

Suzuki accessories are designed specifically for Suzuki vehicles and are subject to the same quality standards as the vehicles themselves. We would like to draw your specific attention to the fact that only Suzuki original accessories are tested and approved by Suzuki. The requirements they have to meet are set out in the relevant manuals. Under certain circumstances, the installation and/or usage of other accessory parts may therefore have a negative impact on the characteristics of your vehicle as set out in the design specifications, thereby impairing ride safety. Suzuki cannot, under any circumstances, be made liable for damage occurring from the use of any accessory that is not a Suzuki original accessory.

Subject to engineering and design modifications without prior notice. Please consult the current price list for details of accessory prices.

The details given in this brochure are non-binding and are purely for informational purposes. Errors excepted.

## SUZUKI IS MORE THAN MARINE.



Automobile, motorbike and marine - 100 years of innovation. Visit our homepage via QR-code and learn more about Suzuki - way of life.

Suzuki International Europe GmbH,  
Suzuki Allee 7, 64625 Bensheim

**Details of many more original accessories and other extras can be found at: [www.suzuki.eu](http://www.suzuki.eu)**

Your Suzuki partner: